

# Anti-JEV NS3/Serine protease NS3 Polyclonal Antibody

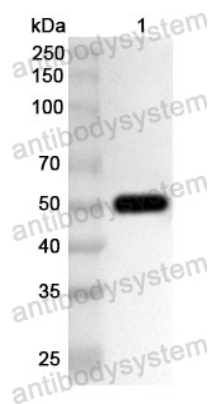
## Summary

---

<b>Catalog No.</b>	PVV39801
<b>Host species</b>	Rabbit
<b>Species reactivity</b>	Japanese encephalitis virus (strain SA-14) (JEV)
<b>Immunogen</b>	E. coli - derived recombinant Japanese encephalitis virus (JEV) NS3/Serine protease NS3 (Pro1685-Arg2123).
<b>Form</b>	Liquid
<b>Storage buffer</b>	0.01M PBS, pH 7.4, 50% Glycerol, 0.05% Proclin 300.
<b>Concentration</b>	0.33 mg/ml
<b>Clonality</b>	Polyclonal
<b>Isotype</b>	IgG
<b>Applications</b>	ELISA, IHC, WB
<b>Target</b>	Genome polyprotein, Serine protease NS3, Flavivirin protease NS3 catalytic subunit, Non-structural protein 3
<b>Purification</b>	Antigen affinity purification.
<b>Accession</b>	P27395
<b>Stability and Storage</b>	Use a manual defrost freezer and avoid repeated freeze thaw cycles. Store at 4°C for frequent use. Store at -20 to -80°C for twelve months from the date of receipt.
<b>Note</b>	For research use only.

## Data Image

---



Western Blot

Recombinant Protein lysates were subjected to SDS PAGE followed by western blot with NS3/Serine protease NS3 antibody (PVV39801) at 1  $\mu$ g/ml.

Lane 1: Recombinant Protein

Second Ab: Goat Anti-Rabbit IgG H&L Polyclonal antibody, HRP (PTB96431) at 0.1  $\mu$ g/mL.

Predict MW: 52 kDa

Observed MW: 52 kDa