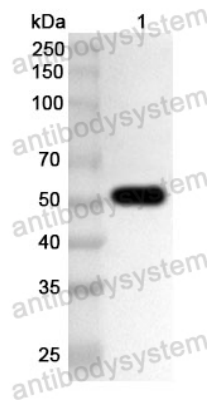


Anti-BCCV Gc/Glycoprotein C Polyclonal Antibody

Summary

Catalog No.	PVV38401
Host species	Rabbit
Tested applications	ELISA: 1:4000-1:8000, WB: 1:1000-1:4000
Species reactivity	Black Creek Canal orthohantavirus (BCCV) (Black Creek Canal virus)
Immunogen	E. coli - derived recombinant BCCV Gc/Glycoprotein C (Asp655-Asn1110).
Form	Liquid
Storage buffer	0.01M PBS, pH 7.4, 50% Glycerol, 0.05% Proclin 300.
Clonality	Polyclonal
Isotype	IgG
Associated products	P0DTJ0
Applications	ELISA, IHC, WB
Target	Envelopment polyprotein, Glycoprotein precursor, M polyprotein, Glycoprotein N, Gn, Glycoprotein G1, Glycoprotein C, Gc, Glycoprotein G2, GP
Purification	Purified by antigen affinity column.
Accession	P0DTJ0
Stability and Storage	Use a manual defrost freezer and avoid repeated freeze thaw cycles. Store at 2 to 8°C for frequent use. Store at -20 to -80°C for twelve months from the date of receipt.
Note	For research use only.

Data Image



Western Blot

Recombinant Protein lysates were subjected to SDS PAGE followed by western blot with Gc/Glycoprotein C antibody (PVV38401) at 1 μ g/ml.

Lane 1: Recombinant Protein

Second Ab: Goat Anti-Rabbit IgG H&L Polyclonal antibody, HRP (PTB96431) at 0.1 μ g/mL.

Predict MW: 52 kDa

Observed MW: 52 kDa