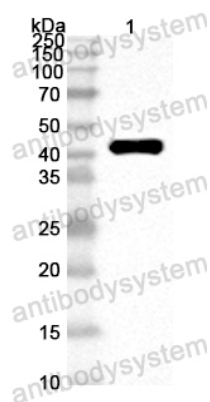


Anti-ASFV CP2475L (p37) Polyclonal Antibody

Summary

Catalog No.	PVV39301
Host species	Rabbit
Tested applications	ELISA: 1:4000-1:8000, WB: 1:1000-1:4000
Species reactivity	African swine fever virus (strain Badajoz 1971 Vero-adapted) (Ba71V) (ASFV)
Immunogen	E. coli - derived recombinant ASFV CP2475L (p37) (Ala523-Gly893).
Form	Liquid
Storage buffer	0.01M PBS, pH 7.4, 50% Glycerol, 0.05% Proclin 300.
Clonality	Polyclonal
Isotype	IgG
Applications	ELISA, IHC, WB
Target	Polyprotein pp220, 220 kDa polyprotein, p34, p14, p37, p150, p5, Ba71V-92, CP2475L
Purification	Purified by antigen affinity column.
Accession	Q08358
Stability and Storage	Use a manual defrost freezer and avoid repeated freeze thaw cycles. Store at 2 to 8°C for frequent use. Store at -20 to -80°C for twelve months from the date of receipt.
Note	For research use only.

Data Image



Western Blot

Recombinant Protein lysates were subjected to SDS PAGE followed by western blot with CP2475L (p37) antibody (PVV39301) at 1 μ g/ml.

Lane 1: Recombinant Protein

Second Ab: Goat Anti-Rabbit IgG H&L Polyclonal antibody, HRP (PTB96431) at 0.1 μ g/mL.

Predict MW: 44 kDa

Observed MW: 44 kDa