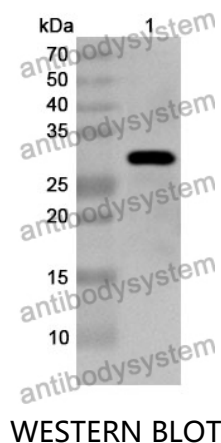


Anti-IGF2BP2 Polyclonal Antibody

Summary

Catalog No.	PHJ91501
Host species	Rabbit
Tested applications	ELISA: 1:4000-1:8000, IHC: 1:50-1:100, WB: 1:1000-1:4000
Species reactivity	Human, Mouse, Rat
Immunogen	E. coli - derived recombinant Human IGF2BP2 (Ser141-Pro384).
Form	Liquid
Storage buffer	0.01M PBS, pH 7.4, 50% Glycerol, 0.05% Proclin 300.
Clonality	Polyclonal
Isotype	IgG
Applications	ELISA, IHC, WB
Target	Hepatocellular carcinoma autoantigen p62,IMP2,IGF-II mRNA-binding protein 2,IMP-2,VICKZ2,VICKZ family member 2,IGF2BP2,IGF2 mRNA-binding protein 2,Insulin-like growth factor 2 mRNA-binding protein 2
Purification	Purified by antigen affinity column.
Accession	Q9Y6M1
Stability and Storage	Use a manual defrost freezer and avoid repeated freeze thaw cycles. Store at 2 to 8°C for frequent use. Store at -20 to -80°C for twelve months from the date of receipt.
Note	For research use only.

Data Image



Recombinant Protein lysates were subjected to SDS PAGE followed by western blot with IGF2BP2 antibody (PHJ91501) at 1 µg/ml.

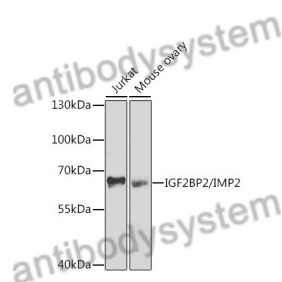
Lane 1: Recombinant protein

Second Ab: Goat Anti-Rabbit IgG H&L Polyclonal antibody, HRP (PTB96431) at 0.1 µg/mL.

Predict MW: 29 kDa

Observed MW: 29 kDa

Various lysates were subjected to SDS PAGE followed by western blot with IGF2BP2 antibody (PHJ91501) at 1 µg/ml.



Lane 1: Jurkat

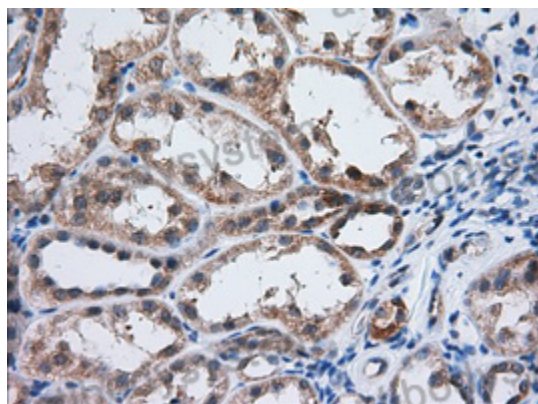
Lane 2: Mouse ovary

Second Ab: Goat Anti-Rabbit IgG H&L Polyclonal antibody, HRP (PTB96431) at 0.1 µg/mL.

Predict MW: 66 kDa

Observed MW: 66 kDa

Western Blot



Immunohistochemical

Immunohistochemical analysis of human kidney stained for IGF2BP2 with PHJ91501.