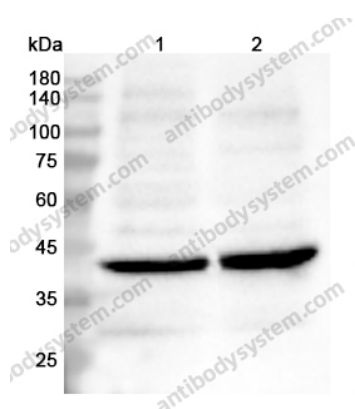


Anti-PSAT1 Polyclonal Antibody

Summary

Catalog No.	PHJ90401
Host species	Rabbit
Tested applications	ELISA: 1:4000-1:8000, IHC: 1:50-1:100, WB: 1:1000-1:4000
Species reactivity	Human, Mouse, Rat
Immunogen	E. coli - derived recombinant Human PSAT1 (Met1-Gly312).
Form	Liquid
Storage buffer	0.01M PBS, pH 7.4, 50% Glycerol, 0.05% Proclin 300.
Clonality	Polyclonal
Isotype	IgG
Applications	ELISA, IHC, WB
Target	Phosphohydroxythreonine aminotransferase,PSAT,PSAT1,PSA,Phosphoserine aminotransferase
Purification	Purified by antigen affinity column.
Accession	Q9Y617
Stability and Storage	Use a manual defrost freezer and avoid repeated freeze thaw cycles. Store at 2 to 8°C for frequent use. Store at -20 to -80°C for twelve months from the date of receipt.
Note	For research use only.

Data Image



Western blot

Various lysates were subjected to SDS PAGE followed by western blot with PSAT1 antibody (PHJ90401) at 0.62 µg/ml.

Lane 1: HeLa cell lysate

Lane 2: 293T cell lysate

Second Ab: Goat Anti-Rabbit IgG H&L Polyclonal antibody, HRP (PTB96431) at 0.1 µg/mL.

Predict MW: 40 kDa

Observed MW: 40 kDa



Western Blot

Recombinant Protein lysates were subjected to SDS PAGE followed by western blot with PSAT1 antibody (PHJ90401) at 1 µg/ml.

Lane 1: Recombinant Protein

Second Ab: Goat Anti-Rabbit IgG H&L Polyclonal antibody, HRP (PTB96431) at 0.1 µg/mL.

Predict MW: 36 kDa

Observed MW: 36 kDa