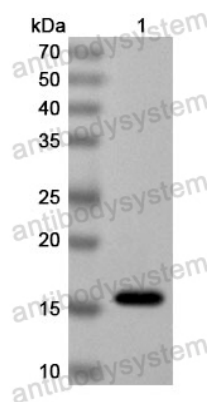


Anti-Human WWP1 Polyclonal Antibody

Summary

Catalog No.	PHN48801
Host species	Rabbit
Tested applications	ELISA: 1:4000-1:8000, IHC: 1:50-1:100, WB: 1:1000-1:4000
Species reactivity	Human
Immunogen	E. coli - derived recombinant Human WWP1 (Arg17-Gly141).
Form	Liquid
Storage buffer	0.01M PBS, pH 7.4, 50% Glycerol, 0.05% Proclin 300.
Clonality	Polyclonal
Isotype	IgG
Applications	ELISA, IHC, WB
Target	NEDD4-like E3 ubiquitin-protein ligase WWP1, 2.3.2.26, Atrophin-1-interacting protein 5, AIP5, HECT-type E3 ubiquitin transferase WWP1, TGIF-interacting ubiquitin ligase 1, Tiul1, WW domain-containing protein 1, WWP1
Purification	Purified by antigen affinity column.
Accession	Q9H0M0
Stability and Storage	Use a manual defrost freezer and avoid repeated freeze thaw cycles. Store at 2 to 8°C for frequent use. Store at -20 to -80°C for twelve months from the date of receipt.
Note	For research use only.

Data Image



Western Blot

Recombinant Protein lysates were subjected to SDS PAGE followed by western blot with WWP1 antibody (PHN48801) at 1 μ g/ml.

Lane 1: Recombinant Protein

Second Ab: Goat Anti-Rabbit IgG H&L Polyclonal antibody, HRP (PTB96431) at 0.1 μ g/mL.

Predict MW: 16 kDa

Observed MW: 16 kDa