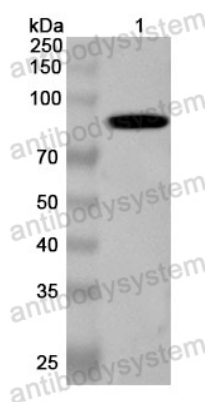


Anti-Human SUPV3L1 Polyclonal Antibody

Summary

Catalog No.	PHN46701
Host species	Rabbit
Tested applications	ELISA: 1:4000-1:8000, IHC: 1:50-1:100, WB: 1:1000-1:4000
Species reactivity	Human
Immunogen	E. coli - derived recombinant Human SUPV3L1 (Thr47-Glu722).
Form	Liquid
Storage buffer	0.01M PBS, pH 7.4, 50% Glycerol, 0.05% Proclin 300.
Clonality	Polyclonal
Isotype	IgG
Applications	ELISA, IHC, WB
Target	ATP-dependent RNA helicase SUPV3L1, mitochondrial, 3.6.4.13, Suppressor of var1 3-like protein 1, SUV3-like protein 1, SUPV3L1, SUV3
Purification	Purified by antigen affinity column.
Accession	Q8IYB8
Stability and Storage	Use a manual defrost freezer and avoid repeated freeze thaw cycles. Store at 2 to 8°C for frequent use. Store at -20 to -80°C for twelve months from the date of receipt.
Note	For research use only.

Data Image



Western Blot

Recombinant Protein lysates were subjected to SDS PAGE followed by western blot with SUPV3L1 antibody (PHN46701) at 1 μ g/ml.

Lane 1: Recombinant Protein

Second Ab: Goat Anti-Rabbit IgG H&L Polyclonal antibody, HRP (PTB96431) at 0.1 μ g/mL.

Predict MW: 78 kDa

Observed MW: 78 kDa