

# Anti-RNF11 Polyclonal Antibody

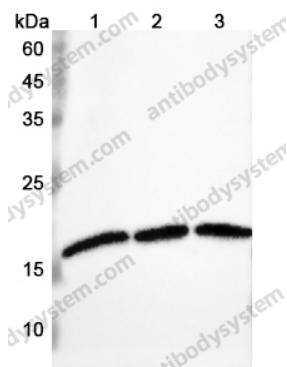
## Summary

---

<b>Catalog No.</b>	PHJ87201
<b>Host species</b>	Rabbit
<b>Tested applications</b>	ELISA: 1:4000-1:8000, IHC: 1:50-1:100, WB: 1:1000-1:4000
<b>Species reactivity</b>	Human, Mouse
<b>Immunogen</b>	E. coli - derived recombinant Human RNF11 (Met1-Asn154).
<b>Form</b>	Liquid
<b>Storage buffer</b>	0.01M PBS, pH 7.4, 50% Glycerol, 0.05% Proclin 300.
<b>Clonality</b>	Polyclonal
<b>Isotype</b>	IgG
<b>Applications</b>	ELISA, IHC, WB
<b>Target</b>	RING finger protein 11,RNF11
<b>Purification</b>	Purified by antigen affinity column.
<b>Accession</b>	Q9Y3C5
<b>Stability and Storage</b>	Use a manual defrost freezer and avoid repeated freeze thaw cycles. Store at 2 to 8°C for frequent use. Store at -20 to -80°C for twelve months from the date of receipt.
<b>Note</b>	For research use only.

## Data Image

---



Western blot

Various lysates were subjected to SDS PAGE followed by western blot with RNF11 antibody (PHJ87201) at 0.57 µg/ml.

Lane 1: 293T cell lysate

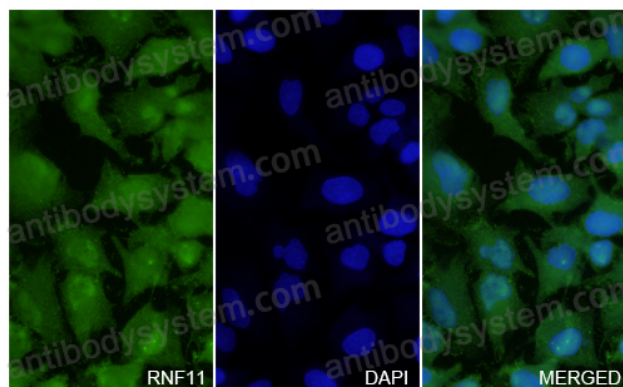
Lane 2: HeLa cell lysate

Lane 3: U87MG cell lysate

Second Ab: Goat Anti-Rabbit IgG H&L Polyclonal antibody, HRP (PTB96431) at 0.1 µg/mL.

Predict MW: 17 kDa

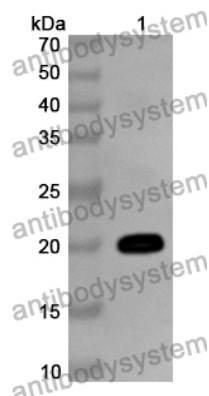
Observed MW: 17 kDa



Immunocytochemistry/ Immunofluorescence

RNF11 in HeLa Cell Line.

The HeLa cells were fixed with 4% paraformaldehyde (20 min), and then blocked with 5% goat serum for 1h. And the cells were incubated for 2h at 37°C with RNF11 (PHJ87201) at 11.4 µg/ml. The section was then incubated with Goat Anti-Rabbit IgG (Alexa Fluor-488) preabsorbed at 1/100 dilution (Shown in green) for 1 hour at room temperature. Nuclear DNA was labelled with DAPI (shown in blue).



Western Blot

Recombinant Protein lysates were subjected to SDS PAGE followed by western blot with RNF11 antibody (PHJ87201) at 1 µg/ml.

Lane 1: Recombinant Protein

Second Ab: Goat Anti-Rabbit IgG H&L Polyclonal antibody, HRP (PTB96431) at 0.1 µg/mL.

Predict MW: 20 kDa

Observed MW: 20 kDa