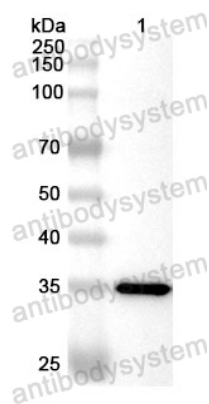


Anti-Human PDX1 Polyclonal Antibody

Summary

| | |
|------------------------------|--|
| Catalog No. | PHE96501 |
| Host species | Rabbit |
| Tested applications | ELISA: 1:4000-1:8000, IHC: 1:50-1:100, WB: 1:1000-1:4000 |
| Species reactivity | Human |
| Immunogen | E. coli - derived recombinant Human PDX1 (Thr151-Gly210). |
| Form | Liquid |
| Storage buffer | 0.01M PBS, pH 7.4, 50% Glycerol, 0.05% Proclin 300. |
| Clonality | Polyclonal |
| Isotype | IgG |
| Applications | ELISA, IHC, WB |
| Target | Pancreas/duodenum homeobox protein 1, PDX-1, Glucose-sensitive factor, GSF, Insulin promoter factor 1, IPF-1, Insulin upstream factor 1, IUF-1, Islet/duodenum homeobox-1, IDX-1, Somatostatin-transactivating factor 1, STF-1, PDX1, IPF1, STF1 |
| Purification | Purified by antigen affinity column. |
| Accession | P52945 |
| Stability and Storage | Use a manual defrost freezer and avoid repeated freeze thaw cycles. Store at 2 to 8°C for frequent use. Store at -20 to -80°C for twelve months from the date of receipt. |
| Note | For research use only. |

Data Image



Western Blot

Recombinant Protein lysates were subjected to SDS PAGE followed by western blot with PDX1 antibody (PHE96501) at 1 μ g/ml.

Lane 1: Recombinant Protein

Second Ab: Goat Anti-Rabbit IgG H&L Polyclonal antibody, HRP (PTB96431) at 0.1 μ g/mL.

Predict MW: 36 kDa

Observed MW: 36 kDa