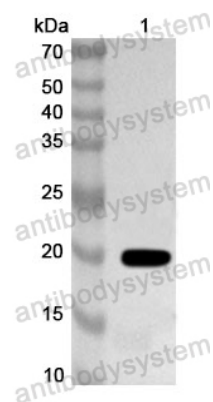


Anti-Human KRT2 Polyclonal Antibody

Summary

Catalog No.	PHE16201
Host species	Rabbit
Tested applications	ELISA: 1:4000-1:8000, IHC: 1:50-1:100, WB: 1:1000-1:4000
Species reactivity	Human
Immunogen	E. coli - derived recombinant Human KRT2 (Asn342-Leu495).
Form	Liquid
Storage buffer	0.01M PBS, pH 7.4, 50% Glycerol, 0.05% Proclin 300.
Clonality	Polyclonal
Isotype	IgG
Applications	ELISA, IHC, WB
Target	Keratin, type II cytoskeletal 2 epidermal, Cytokeratin-2e, CK-2e, Epithelial keratin-2e, Keratin-2 epidermis, Keratin-2e, K2e, Type-II keratin Kb2, KRT2, KRT2A, KRT2E
Purification	Purified by antigen affinity column.
Accession	P35908
Stability and Storage	Use a manual defrost freezer and avoid repeated freeze thaw cycles. Store at 2 to 8°C for frequent use. Store at -20 to -80°C for twelve months from the date of receipt.
Note	For research use only.

Data Image



Western Blot

Recombinant Protein lysates were subjected to SDS PAGE followed by western blot with KRT2 antibody (PHE16201) at 1 $\mu\text{g/ml}$.

Lane 1: Recombinant Protein

Second Ab: Goat Anti-Rabbit IgG H&L Polyclonal antibody, HRP (PTB96431) at 0.1 $\mu\text{g/mL}$.

Predict MW: 20 kDa

Observed MW: 20 kDa