

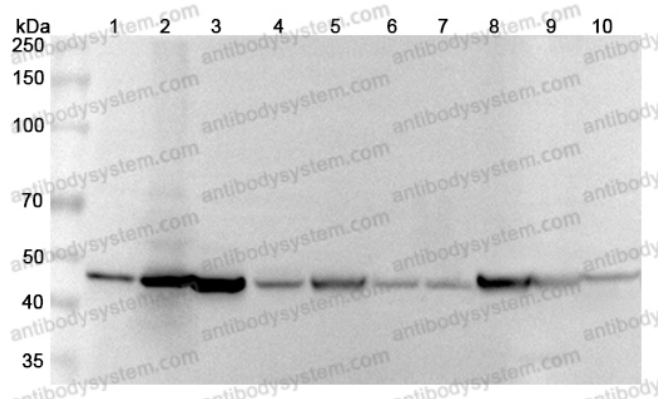
Anti-GDA Polyclonal Antibody

Summary

Catalog No.	PHJ86601
Host species	Rabbit
Tested applications	ELISA: 1:4000-1:8000, IHC: 1:50-1:100, WB: 1:1000-1:4000
Species reactivity	Human, Mouse, Rat
Immunogen	E. coli - derived recombinant Human GDA (Met1-Val454).
Form	Liquid
Storage buffer	0.01M PBS, pH 7.4, 50% Glycerol, 0.05% Proclin 300.
Clonality	Polyclonal
Isotype	IgG
Applications	ELISA, IHC, WB
Target	GAH,Guanine deaminase,Guanase,Guanine aminohydrolase,Guanine aminase,GDA,p51-nedasin,KIAA1258
Purification	Purified by antigen affinity column.
Accession	Q9Y2T3
Stability and Storage	Use a manual defrost freezer and avoid repeated freeze thaw cycles. Store at 2 to 8°C for frequent use. Store at -20 to -80°C for twelve months from the date of receipt.
Note	For research use only.

Data Image

Various lysates were subjected to SDS PAGE followed by western blot with GDA antibody (PHJ86601) at 1 μ g/ml.



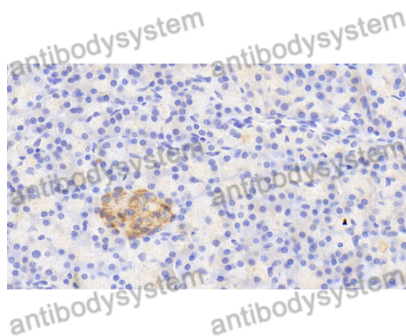
Western Blot

Lane 1: Hela cell lysate
Lane 2: SKOV3 cell lysate
Lane 3: NICH460 cell lysate
Lane 4: HepG2 cell lysate
Lane 5: Mouse brain lysate
Lane 6: Mouse liver lysate
Lane 7: Mouse kidney lysate
Lane 8: Rat brain lysate
Lane 9: Rat liver lysate
Lane 10: Rat kidney lysate

Second Ab: Goat Anti-Rabbit IgG H&L Polyclonal antibody, HRP (PTB96431) at 0.1 μ g/mL.

Predict MW: 51 kDa

Observed MW: 48 kDa



Immunohistochemical

Immunohistochemical analysis of human pancreas stained for GDA with PHJ86601.



Western Blot

Recombinant Protein lysates were subjected to SDS PAGE followed by western blot with GDA antibody (PHJ86601) at 1 μ g/ml.

Lane 1: Recombinant Protein

Second Ab: Goat Anti-Rabbit IgG H&L Polyclonal antibody, HRP (PTB96431) at 0.1 μ g/mL.

Predict MW: 53 kDa

Observed MW: 53 kDa