

Anti-Human DBT/BCOADC-E2 Polyclonal Antibody

Summary

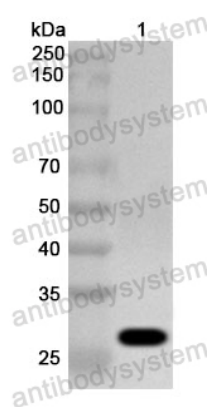
Catalog No.	PHC86501
Host species	Rabbit
Tested applications	ELISA: 1:4000-1:8000, IHC: 1:50-1:100, WB: 1:1000-1:4000
Species reactivity	Human
Immunogen	E. coli - derived recombinant Human DBT/BCOADC-E2 (Gly258-Lys482).
Form	Liquid
Storage buffer	0.01M PBS, pH 7.4, 50% Glycerol, 0.05% Proclin 300.
Clonality	Polyclonal
Isotype	IgG
Applications	ELISA, IHC, WB
Target	Lipoamide acyltransferase component of branched-chain alpha-keto acid dehydrogenase complex, mitochondrial, 2.3.1.168, 52 kDa mitochondrial autoantigen of primary biliary cirrhosis, Branched chain 2-oxo-acid dehydrogenase complex component E2, BCOADC-E2, Branched-chain alpha-keto acid dehydrogenase complex component E2, BCKAD-E2, BCKADE2, BCKDH-E2, Dihydrolipoamide acetyltransferase component of branched-chain alpha-keto acid dehydrogenase complex, Dihydrolipoamide branched chain transacylase, Dihydrolipoyllysine-residue (2-methylpropanoyl)transferase, DBT, BCATE2, BCKDHE2
Purification	Purified by antigen affinity column.
Accession	P11182

Stability and Storage

Use a manual defrost freezer and avoid repeated freeze thaw cycles. Store at 2 to 8°C for frequent use. Store at -20 to -80°C for twelve months from the date of receipt.

Note

For research use only.

Data Image

Western Blot

Recombinant Protein lysates were subjected to SDS PAGE followed by western blot with DBT/BCOADC-E2 antibody (PHC86501) at 1 µg/ml.

Lane 1: Recombinant Protein

Second Ab: Goat Anti-Rabbit IgG H&L Polyclonal antibody, HRP (PTB96431) at 0.1 µg/mL.

Predict MW: 27 kDa

Observed MW: 27 kDa