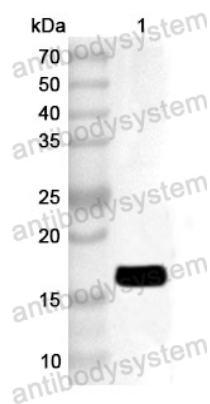


Anti-Human POLR1D Polyclonal Antibody

Summary

Catalog No.	PHC73101
Host species	Rabbit
Tested applications	ELISA: 1:4000-1:8000, IHC: 1:50-1:100, WB: 1:1000-1:4000
Species reactivity	Human
Immunogen	E. coli - derived recombinant Human POLR1D (Met1-Phe133).
Form	Liquid
Storage buffer	0.01M PBS, pH 7.4, 50% Glycerol, 0.05% Proclin 300.
Clonality	Polyclonal
Isotype	IgG
Applications	ELISA, IHC, WB
Target	DNA-directed RNA polymerases I and III subunit RPAC2, RNA polymerases I and III subunit AC2, AC19, DNA-directed RNA polymerase I subunit D, RNA polymerase I 16 kDa subunit, RPA16, RPC16, hRPA19, POLR1D
Purification	Purified by antigen affinity column.
Accession	P0DPB6
Stability and Storage	Use a manual defrost freezer and avoid repeated freeze thaw cycles. Store at 2 to 8°C for frequent use. Store at -20 to -80°C for twelve months from the date of receipt.
Note	For research use only.

Data Image



Western Blot

Recombinant Protein lysates were subjected to SDS PAGE followed by western blot with POLR1D antibody (PHC73101) at 1 μ g/ml.

Lane 1: Recombinant Protein

Second Ab: Goat Anti-Rabbit IgG H&L Polyclonal antibody, HRP (PTB96431) at 0.1 μ g/mL.

Predict MW: 17 kDa

Observed MW: 17 kDa