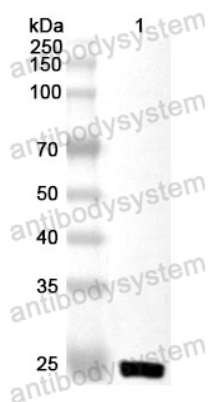


Anti-Human CRYBA1 Polyclonal Antibody

Summary

Catalog No.	PHC18001
Host species	Rabbit
Tested applications	ELISA: 1:4000-1:8000, IHC: 1:50-1:100, WB: 1:1000-1:4000
Species reactivity	Human
Immunogen	E. coli - derived recombinant Human CRYBA1 (Gly29-Gln215).
Form	Liquid
Storage buffer	0.01M PBS, pH 7.4, 50% Glycerol, 0.05% Proclin 300.
Clonality	Polyclonal
Isotype	IgG
Applications	ELISA, IHC, WB
Target	Beta-crystallin A3, Beta-crystallin A3, isoform A1, Delta4 form, Beta-crystallin A3, isoform A1, Delta7 form, Beta-crystallin A3, isoform A1, Delta8 form, CRYBA1, CRYB1
Purification	Purified by antigen affinity column.
Accession	P05813
Stability and Storage	Use a manual defrost freezer and avoid repeated freeze thaw cycles. Store at 2 to 8°C for frequent use. Store at -20 to -80°C for twelve months from the date of receipt.
Note	For research use only.

Data Image



Western Blot

Recombinant Protein lysates were subjected to SDS PAGE followed by western blot with CRYBA1 antibody (PHC18001) at 1 μ g/ml.

Lane 1: Recombinant Protein

Second Ab: Goat Anti-Rabbit IgG H&L Polyclonal antibody, HRP (PTB96431) at 0.1 μ g/mL.

Predict MW: 24 kDa

Observed MW: 24 kDa