

# Anti-Human PRH1 Polyclonal Antibody

## Summary

---

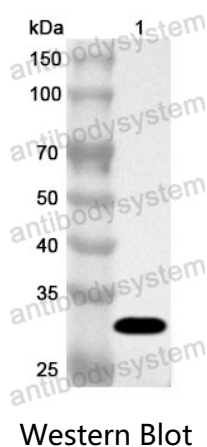
|                              |  |
|------------------------------|--|
| <b>Catalog No.</b>           | PHC02801   |
| <b>Host species</b>          | Rabbit   |
| <b>Tested applications</b>   | ELISA: 1:4000-1:8000, IHC: 1:50-1:100, WB: 1:1000-1:4000   |
| <b>Species reactivity</b>    | Human  |
| <b>Immunogen</b>             | E. coli - derived recombinant Human PRH1 (Gln17-Gln166).   |
| <b>Form</b>                  | Liquid   |
| <b>Storage buffer</b>        | 0.01M PBS, pH 7.4, 50% Glycerol, 0.05% Proclin 300.  |
| <b>Clonality</b>             | Polyclonal   |
| <b>Isotype</b>               | IgG  |
| <b>Applications</b>          | ELISA, IHC, WB   |
| <b>Target</b>                | Salivary acidic proline-rich phosphoprotein 1/2, Db-s, PRP-1/PRP-2, Parotid acidic protein, Pa, Parotid double-band protein, Parotid isoelectric focusing variant protein, PIF-S, Parotid proline-rich protein 1/2, Pr1/Pr2, Protein C, Salivary acidic proline-rich phosphoprotein 1/2, Salivary acidic proline-rich phosphoprotein 3/4, Db-F, PIF-F, PRP-3/PRP-4, Protein A, Peptide P-C, PRH1, PRH2 |
| <b>Purification</b>          | Purified by antigen affinity column.   |
| <b>Accession</b>             | P02810   |
| <b>Stability and Storage</b> | Use a manual defrost freezer and avoid repeated freeze thaw cycles. Store at 2 to 8°C for frequent use. Store at -20 to -80°C for twelve months from the date of receipt.  |

**Note**

For research use only.

## Data Image

---



Recombinant Protein lysates were subjected to SDS PAGE followed by western blot with PRH1 antibody (PHC02801) at 1 µg/ml.

Lane 1: Recombinant Protein

Second Ab: Goat Anti-Rabbit IgG H&L Polyclonal antibody, HRP (PTB96431) at 0.1 µg/mL.

Predict MW: 31 kDa

Observed MW: 31 kDa