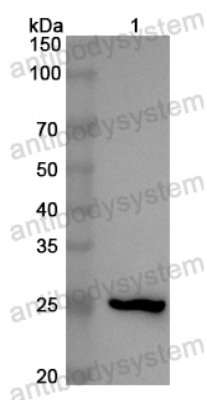


Anti-Human ESRRB Polyclonal Antibody

Summary

Catalog No.	PHB72601
Host species	Rabbit
Tested applications	ELISA: 1:4000-1:8000, IHC: 1:50-1:100, WB: 1:1000-1:4000
Species reactivity	Human
Immunogen	E. coli - derived recombinant Human ESRRB (Gly235-Val433).
Form	Liquid
Storage buffer	0.01M PBS, pH 7.4, 50% Glycerol, 0.05% Proclin 300.
Clonality	Polyclonal
Isotype	IgG
Applications	ELISA, IHC, WB
Target	ERR-beta, NR3B2, Estrogen-related receptor beta, ESRL2, Estrogen receptor-like 2, ERR beta-2, ESRRB, Nuclear receptor subfamily 3 group B member 2, Steroid hormone receptor ERR2, ERRB2
Purification	Purified by antigen affinity column.
Accession	O95718
Stability and Storage	Use a manual defrost freezer and avoid repeated freeze thaw cycles. Store at 2 to 8°C for frequent use. Store at -20 to -80°C for twelve months from the date of receipt.
Note	For research use only.

Data Image



Western blot

Recombinant Protein lysates were subjected to SDS PAGE followed by western blot with ESRRB antibody (PHB72601) at 1 $\mu\text{g/ml}$.

Lane 1: Recombinant Protein

Second Ab: Goat Anti-Rabbit IgG H&L Polyclonal antibody, HRP (PTB96431) at 0.1 $\mu\text{g/mL}$.

Predict MW: 25 kDa

Observed MW: 25 kDa