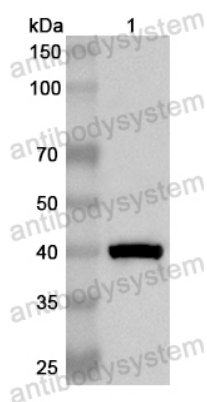


Anti-Human KDM4B Polyclonal Antibody

Summary

Catalog No.	PHB49601
Host species	Rabbit
Tested applications	ELISA: 1:4000-1:8000, IHC: 1:50-1:100, WB: 1:1000-1:4000
Species reactivity	Human
Immunogen	E. coli - derived recombinant Human KDM4B (Met16-Asp338).
Form	Liquid
Storage buffer	0.01M PBS, pH 7.4, 50% Glycerol, 0.05% Proclin 300.
Clonality	Polyclonal
Isotype	IgG
Applications	ELISA, IHC, WB
Target	Lysine-specific demethylase 4B, 1.14.11.66, JmjC domain-containing histone demethylation protein 3B, Jumonji domain-containing protein 2B, [histone H3]-trimethyl-L-lysine(9) demethylase 4B, KDM4B, JHDM3B, JMJD2B, KIAA0876
Purification	Purified by antigen affinity column.
Accession	O94953
Stability and Storage	Use a manual defrost freezer and avoid repeated freeze thaw cycles. Store at 2 to 8°C for frequent use. Store at -20 to -80°C for twelve months from the date of receipt.
Note	For research use only.

Data Image



Western blot

Recombinant Protein lysates were subjected to SDS PAGE followed by western blot with KDM4B antibody (PHB49601) at 1 μ g/ml.

Lane 1: Recombinant Protein

Second Ab: Goat Anti-Rabbit IgG H&L Polyclonal antibody, HRP (PTB96431) at 0.1 μ g/mL.

Predict MW: 40 kDa

Observed MW: 40 kDa