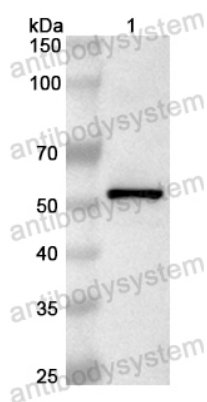


Anti-Human GLCE Polyclonal Antibody

Summary

Catalog No.	PHB48901
Host species	Rabbit
Tested applications	ELISA: 1:4000-1:8000, IHC: 1:50-1:100, WB: 1:1000-1:4000
Species reactivity	Human
Immunogen	E. coli - derived recombinant Human GLCE (Ser176-Asn617).
Form	Liquid
Storage buffer	0.01M PBS, pH 7.4, 50% Glycerol, 0.05% Proclin 300.
Clonality	Polyclonal
Isotype	IgG
Applications	ELISA, IHC, WB
Target	D-glucuronyl C5-epimerase, 5.1.3.17, Heparan sulfate C5-epimerase, Hsepi, Heparin/heparan sulfate:glucuronic acid C5-epimerase, Heparosan-N-sulfate-glucuronate 5-epimerase, GLCE, KIAA0836
Purification	Purified by antigen affinity column.
Accession	O94923
Stability and Storage	Use a manual defrost freezer and avoid repeated freeze thaw cycles. Store at 2 to 8°C for frequent use. Store at -20 to -80°C for twelve months from the date of receipt.
Note	For research use only.

Data Image



Western blot

Recombinant Protein lysates were subjected to SDS PAGE followed by western blot with GLCE antibody (PHB48901) at 1 μ g/ml.

Lane 1: Recombinant Protein

Second Ab: Goat Anti-Rabbit IgG H&L Polyclonal antibody, HRP (PTB96431) at 0.1 μ g/mL.

Predict MW: 52 kDa

Observed MW: 52 kDa