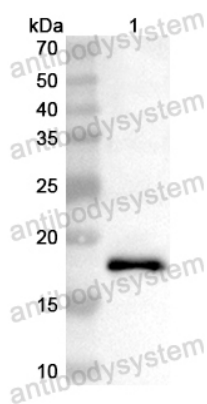


Anti-Human GRAP2 Polyclonal Antibody

Summary

Catalog No.	PHB30801
Host species	Rabbit
Tested applications	ELISA: 1:4000-1:8000, IHC: 1:50-1:100, WB: 1:1000-1:4000
Species reactivity	Human
Immunogen	E. coli - derived recombinant Human GRAP2 (Met1-Gln140).
Form	Liquid
Storage buffer	0.01M PBS, pH 7.4, 50% Glycerol, 0.05% Proclin 300.
Clonality	Polyclonal
Isotype	IgG
Applications	ELISA, IHC, WB
Target	GRB2-related adapter protein 2, Adapter protein GRID, GRB-2-like protein, GRB2L, GRBLG, GRBX, Grf40 adapter protein, Grf-40, Growth factor receptor-binding protein, Hematopoietic cell-associated adapter protein GrpL, P38, Protein GADS, SH3-SH2-SH3 adapter Mona, GRAP2, GADS, GRB2L, GRID
Purification	Purified by antigen affinity column.
Accession	O75791
Stability and Storage	Use a manual defrost freezer and avoid repeated freeze thaw cycles. Store at 2 to 8°C for frequent use. Store at -20 to -80°C for twelve months from the date of receipt.
Note	For research use only.

Data Image



Western blot

Recombinant Protein lysates were subjected to SDS PAGE followed by western blot with GRAP2 antibody (PHB30801) at 1 μ g/ml.

Lane 1: Recombinant Protein

Second Ab: Goat Anti-Rabbit IgG H&L Polyclonal antibody, HRP (PTB96431) at 0.1 μ g/mL.

Predict MW: 18 kDa

Observed MW: 18 kDa