

Anti-Human SRSF10 Polyclonal Antibody

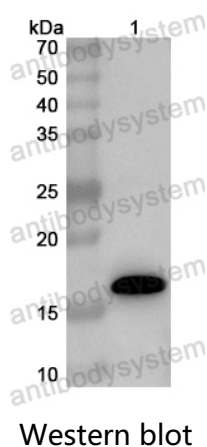
Summary

| | |
|------------------------------|---|
| Catalog No. | PHB22701 |
| Host species | Rabbit |
| Tested applications | ELISA: 1:4000-1:8000, IHC: 1:50-1:100, WB: 1:1000-1:4000 |
| Species reactivity | Human |
| Immunogen | E. coli - derived recombinant Human SRSF10 (Met1-Ser121). |
| Form | Liquid |
| Storage buffer | 0.01M PBS, pH 7.4, 50% Glycerol, 0.05% Proclin 300. |
| Clonality | Polyclonal |
| Isotype | IgG |
| Applications | ELISA, IHC, WB |
| Target | Serine/arginine-rich splicing factor 10, 40 kDa SR-repressor protein, SRrp40, FUS-interacting serine-arginine-rich protein 1, Splicing factor SRp38, Splicing factor, arginine/serine-rich 13A, TLS-associated protein with Ser-Arg repeats, TASR, TLS-associated protein with SR repeats, TLS-associated serine-arginine protein, TLS-associated SR protein, SRSF10, FUSIP1, FUSIP2, SFRS13A, TASR |
| Purification | Purified by antigen affinity column. |
| Accession | O75494 |
| Stability and Storage | Use a manual defrost freezer and avoid repeated freeze thaw cycles. Store at 2 to 8°C for frequent use. Store at -20 to -80°C for twelve months from the date of receipt. |

Note

For research use only.

Data Image



Recombinant Protein lysates were subjected to SDS PAGE followed by western blot with SRSF10 antibody (PHB22701) at 1 µg/ml.

Lane 1: Recombinant Protein

Second Ab: Goat Anti-Rabbit IgG H&L Polyclonal antibody, HRP (PTB96431) at 0.1 µg/mL.

Predict MW: 17 kDa

Observed MW: 17 kDa