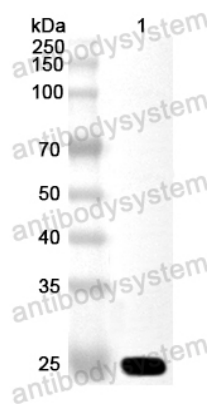


Anti-Human EIF4E2 Polyclonal Antibody

Summary

Catalog No.	PHA95101
Host species	Rabbit
Tested applications	ELISA: 1:4000-1:8000, IHC: 1:50-1:100, WB: 1:1000-1:4000
Species reactivity	Human
Immunogen	E. coli - derived recombinant Human EIF4E2 (Glu53-Pro245).
Form	Liquid
Storage buffer	0.01M PBS, pH 7.4, 50% Glycerol, 0.05% Proclin 300.
Clonality	Polyclonal
Isotype	IgG
Applications	ELISA, IHC, WB
Target	Eukaryotic translation initiation factor 4E type 2, eIF-4E type 2, eIF4E type 2, Eukaryotic translation initiation factor 4E homologous protein, Eukaryotic translation initiation factor 4E-like 3, eIF4E-like protein 4E-LP, mRNA cap-binding protein 4EHP, h4EHP, mRNA cap-binding protein type 3, EIF4E2, EIF4EL3
Purification	Purified by antigen affinity column.
Accession	O60573
Stability and Storage	Use a manual defrost freezer and avoid repeated freeze thaw cycles. Store at 2 to 8°C for frequent use. Store at -20 to -80°C for twelve months from the date of receipt.
Note	For research use only.

Data Image



Western blot

Recombinant Protein lysates were subjected to SDS PAGE followed by western blot with EIF4E2 antibody (PHA95101) at 1 μ g/ml.

Lane 1: Recombinant Protein

Second Ab: Goat Anti-Rabbit IgG H&L Polyclonal antibody, HRP (PTB96431) at 0.1 μ g/mL.

Predict MW: 25 kDa

Observed MW: 25 kDa