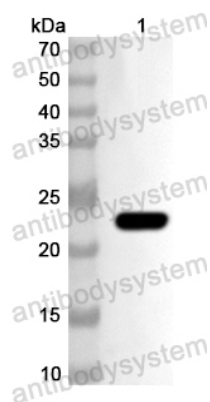


Anti-Human ATP10A Polyclonal Antibody

Summary

Catalog No.	PHA87901
Host species	Rabbit
Tested applications	ELISA: 1:4000-1:8000, IHC: 1:50-1:100, WB: 1:1000-1:4000
Species reactivity	Human
Immunogen	E. coli - derived recombinant Human ATP10A (Glu688-Arg866).
Form	Liquid
Storage buffer	0.01M PBS, pH 7.4, 50% Glycerol, 0.05% Proclin 300.
Clonality	Polyclonal
Isotype	IgG
Applications	ELISA, IHC, WB
Target	Phospholipid-transporting ATPase VA, 7.6.2.1, ATPase class V type 10A, Aminophospholipid translocase VA, P4-ATPase flippase complex alpha subunit ATP10A, ATP10A, ATP10C, ATPVA, ATPVC, KIAA0566
Purification	Purified by antigen affinity column.
Accession	O60312
Stability and Storage	Use a manual defrost freezer and avoid repeated freeze thaw cycles. Store at 2 to 8°C for frequent use. Store at -20 to -80°C for twelve months from the date of receipt.
Note	For research use only.

Data Image



Western blot

Recombinant Protein lysates were subjected to SDS PAGE followed by western blot with ATP10A antibody (PHA87901) at 1 μ g/ml.

Lane 1: Recombinant Protein

Second Ab: Goat Anti-Rabbit IgG H&L Polyclonal antibody, HRP (PTB96431) at 0.1 μ g/mL.

Predict MW: 23 kDa

Observed MW: 23 kDa