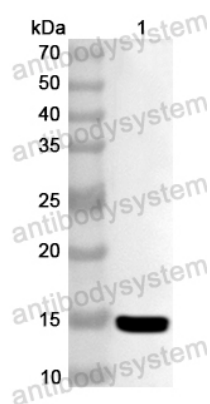


Anti-Human SLC9A3R1 Polyclonal Antibody

Summary

Catalog No.	PHA28601
Host species	Rabbit
Tested applications	ELISA: 1:4000-1:8000, IHC: 1:50-1:100, WB: 1:1000-1:4000
Species reactivity	Human
Immunogen	E. coli - derived recombinant Human SLC9A3R1 (Met1-Ala116).
Form	Liquid
Storage buffer	0.01M PBS, pH 7.4, 50% Glycerol, 0.05% Proclin 300.
Clonality	Polyclonal
Isotype	IgG
Applications	ELISA, IHC, WB
Target	Na(+)/H(+) exchange regulatory cofactor NHE-RF1, NHERF-1, Ezrin-radixin-moesin-binding phosphoprotein 50, EBP50, Regulatory cofactor of Na(+)/H(+) exchanger, Sodium-hydrogen exchanger regulatory factor 1, Solute carrier family 9 isoform A3 regulatory factor 1, NHERF1, NHERF, SLC9A3R1
Purification	Purified by antigen affinity column.
Accession	O14745
Stability and Storage	Use a manual defrost freezer and avoid repeated freeze thaw cycles. Store at 2 to 8°C for frequent use. Store at -20 to -80°C for twelve months from the date of receipt.
Note	For research use only.

Data Image



Western Blot

Recombinant Protein lysates were subjected to SDS PAGE followed by western blot with SLC9A3R1 antibody (PHA28601) at 1 μ g/ml.

Lane 1: Recombinant Protein

Second Ab: Goat Anti-Rabbit IgG H&L Polyclonal antibody, HRP (PTB96431) at 0.1 μ g/mL.

Predict MW: 15 kDa

Observed MW: 15 kDa