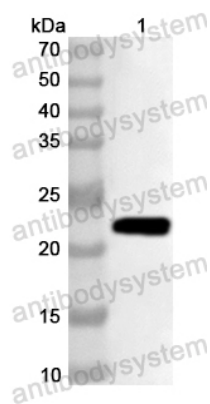


Anti-Human CD368/CLEC4D Polyclonal Antibody

Summary

Catalog No.	PHJ95001
Host species	Rabbit
Tested applications	ELISA: 1:4000-1:8000, IHC: 1:50-1:100, WB: 1:1000-1:4000
Species reactivity	Human
Immunogen	E. coli - derived recombinant Human CD368/CLEC4D (Cys39-Asn215).
Form	Liquid
Storage buffer	0.01M PBS, pH 7.4, 50% Glycerol, 0.05% Proclin 300.
Clonality	Polyclonal
Isotype	IgG
Applications	ELISA, IHC, WB
Target	C-type lectin domain family 4 member D, C-type lectin superfamily member 8, C-type lectin-like receptor 6, CLEC-6, Dendritic cell-associated C-type lectin 3, DC-associated C-type lectin 3, Dectin-3, CD368, CLEC4D, CLECSF8, MCL
Purification	Purified by antigen affinity column.
Accession	Q8WXI8
Stability and Storage	Use a manual defrost freezer and avoid repeated freeze thaw cycles. Store at 2 to 8°C for frequent use. Store at -20 to -80°C for twelve months from the date of receipt.
Note	For research use only.

Data Image



Western Blot

Recombinant Protein lysates were subjected to SDS PAGE followed by western blot with CD368/CLEC4D antibody (PHJ95001) at 1 μ g/ml.

Lane 1: Recombinant Protein

Second Ab: Goat Anti-Rabbit IgG H&L Polyclonal antibody, HRP (PTB96431) at 0.1 μ g/mL.

Predict MW: 23 kDa

Observed MW: 23 kDa