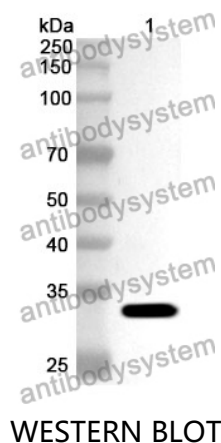


Anti-APPL1 Polyclonal Antibody

Summary

Catalog No.	PHJ78701
Host species	Rabbit
Tested applications	ELISA: 1:4000-1:8000, IHC: 1:50-1:100, WB: 1:1000-1:4000
Species reactivity	Human, Mouse, Rat
Immunogen	E. coli - derived recombinant Human APPL1 (Phe404-Ser673).
Form	Liquid
Storage buffer	0.01M PBS, pH 7.4, 50% Glycerol, 0.05% Proclin 300.
Clonality	Polyclonal
Isotype	IgG
Applications	ELISA, IHC, WB
Target	APPL1,Dip13-alpha,APPL,DIP13A,DCC-interacting protein 13-alpha,KIAA1428,Adapter protein containing PH domain,PTB domain and leucine zipper motif 1
Purification	Purified by antigen affinity column.
Accession	Q9UKG1
Stability and Storage	Use a manual defrost freezer and avoid repeated freeze thaw cycles. Store at 2 to 8°C for frequent use. Store at -20 to -80°C for twelve months from the date of receipt.
Note	For research use only.

Data Image



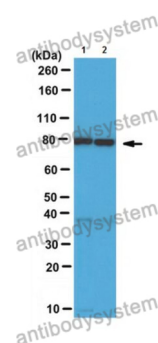
Recombinant Protein lysates were subjected to SDS PAGE followed by western blot with APPL1 antibody (PHJ78701) at 1 µg/ml.

Lane 1: Recombinant protein

Second Ab: Goat Anti-Rabbit IgG H&L Polyclonal antibody, HRP (PTB96431) at 0.1 µg/mL.

Predict MW: 32 kDa

Observed MW: 32 kDa



Various lysates were subjected to SDS PAGE followed by western blot with APPL1 antibody (PHJ78701) at 1 µg/ml.

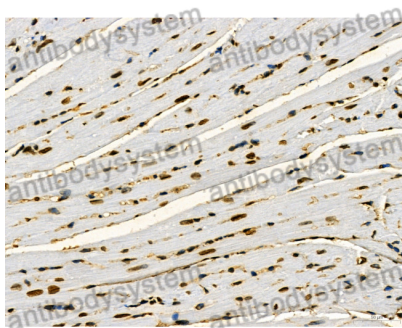
Lane 1: L6

Lane 2: NIH3T3

Second Ab: Goat Anti-Rabbit IgG H&L Polyclonal antibody, HRP (PTB96431) at 0.1 µg/mL.

Predict MW: 80 kDa

Observed MW: 80 kDa



Immunohistochemical

Immunohistochemical analysis of mouse heart stained for APPL1 with PHJ78701.