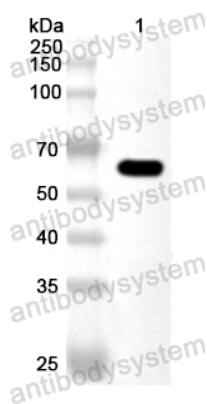


Anti-Baker's yeast SSB1 Polyclonal Antibody

Summary

Catalog No.	PXX54101
Host species	Rabbit
Tested applications	ELISA: 1:4000-1:8000, IHC: 1:50-1:200, WB: 1:1000-1:4000
Species reactivity	Saccharomyces cerevisiae (strain ATCC 204508 / S288c) (Baker's yeast)
Immunogen	E. coli - derived recombinant Baker's yeast SSB1 (Met1-Arg613).
Form	Liquid
Storage buffer	0.01M PBS, pH 7.4, 50% Glycerol, 0.05% Proclin 300.
Concentration	0.84 mg/ml
Clonality	Polyclonal
Isotype	IgG
Applications	ELISA, IHC, WB
Target	Ribosome-associated molecular chaperone SSB1, 3.6.4.10, Cold-inducible protein YG101, Heat shock protein SSB1, Hsp70 chaperone Ssb, SSB1, YG101, YDL229W
Purification	Purified by antigen affinity column.
Accession	P11484
Stability and Storage	Use a manual defrost freezer and avoid repeated freeze thaw cycles. Store at 2 to 8°C for frequent use. Store at -20 to -80°C for twelve months from the date of receipt.
Note	For research use only.

Data Image



Western Blot

Recombinant Protein lysates were subjected to SDS PAGE followed by western blot with SSB1 antibody (PXX54101) at 1 μ g/ml.

Lane 1: Recombinant Protein

Second Ab: Goat Anti-Rabbit IgG H&L Polyclonal antibody, HRP (PTB96431) at 0.1 μ g/mL.

Predict MW: 69 kDa

Observed MW: 69 kDa