

# Anti-Baker's yeast ADH2 Polyclonal Antibody

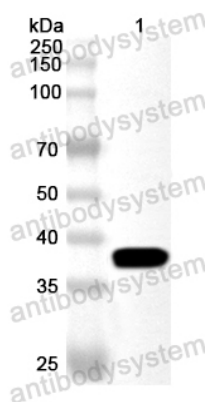
## Summary

---

|                              |   |
|------------------------------|---|
| <b>Catalog No.</b>           | PXX53901  |
| <b>Host species</b>          | Rabbit  |
| <b>Tested applications</b>   | ELISA: 1:4000-1:8000, WB: 1:1000-1:4000   |
| <b>Species reactivity</b>    | Saccharomyces cerevisiae (strain ATCC 204508 / S288c) (Baker's yeast)   |
| <b>Immunogen</b>             | E. coli - derived recombinant Baker's yeast ADH2 (Met1-Lys348).   |
| <b>Form</b>                  | Liquid  |
| <b>Storage buffer</b>        | 0.01M PBS, pH 7.4, 50% Glycerol, 0.05% Proclin 300.   |
| <b>Clonality</b>             | Polyclonal  |
| <b>Isotype</b>               | IgG   |
| <b>Applications</b>          | ELISA, IHC, WB  |
| <b>Target</b>                | Alcohol dehydrogenase 2, 1.1.1.1, Alcohol dehydrogenase II, ADHII, YADH-2, ADH2, ADR2, YMR303C, YM9952.05C  |
| <b>Purification</b>          | Purified by antigen affinity column.  |
| <b>Accession</b>             | P00331  |
| <b>Stability and Storage</b> | Use a manual defrost freezer and avoid repeated freeze thaw cycles. Store at 2 to 8°C for frequent use. Store at -20 to -80°C for twelve months from the date of receipt. |
| <b>Note</b>                  | For research use only.  |

## Data Image

---



Western Blot

Recombinant Protein lysates were subjected to SDS PAGE followed by western blot with ADH2 antibody (PXX53901) at 1  $\mu$ g/ml.

Lane 1: Recombinant Protein

Second Ab: Goat Anti-Rabbit IgG H&L Polyclonal antibody, HRP (PTB96431) at 0.1  $\mu$ g/mL.

Predict MW: 39 kDa

Observed MW: 39 kDa