

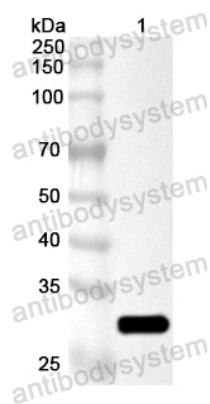
Anti-Clostridium perfringens cpb2/Beta2-toxin

Polyclonal Antibody

Summary

Catalog No.	PXX20901
Host species	Rabbit
Tested applications	ELISA: 1:4000-1:8000, WB: 1:1000-1:4000
Species reactivity	Clostridium perfringens
Immunogen	E. coli - derived recombinant Clostridium perfringens cpb2/Beta2-toxin (Lys31-Ala265).
Form	Liquid
Storage buffer	0.01M PBS, pH 7.4, 50% Glycerol, 0.05% Proclin 300.
Clonality	Polyclonal
Isotype	IgG
Applications	ELISA, IHC, WB
Target	beta-2 toxin CPB2, cpb2
Purification	Purified by antigen affinity column.
Accession	WP_003453373.1
Stability and Storage	Use a manual defrost freezer and avoid repeated freeze thaw cycles. Store at 2 to 8°C for frequent use. Store at -20 to -80°C for twelve months from the date of receipt.
Note	For research use only.

Data Image



Western Blot

Recombinant Protein lysates were subjected to SDS PAGE followed by western blot with cpb2/Beta2-toxin antibody (PXX20901) at 1 μ g/ml.

Lane 1: Recombinant Protein

Second Ab: Goat Anti-Rabbit IgG H&L Polyclonal antibody, HRP (PTB96431) at 0.1 μ g/mL.

Predict MW: 30 kDa

Observed MW: 30 kDa