

# Anti-SARS2 NSP5/3CL-PRO/M Pro Polyclonal Antibody

## Summary

---

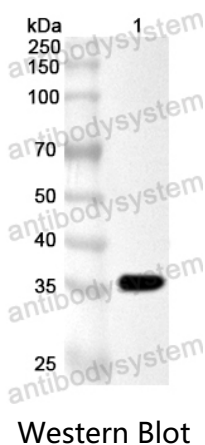
<b>Catalog No.</b>	PVV01302
<b>Host species</b>	Rabbit
<b>Tested applications</b>	ELISA: 1:4000-1:8000, IHC : 1:50-1:200, WB: 1:1000-1:4000
<b>Species reactivity</b>	Severe acute respiratory syndrome coronavirus 2 (2019-nCoV) (SARS-CoV-2)
<b>Immunogen</b>	E. coli - derived recombinant SARS2 NSP5/3CL-PRO/M Pro (Ser2618-Gln2923).
<b>Form</b>	Liquid
<b>Storage buffer</b>	0.01M PBS, pH 7.4, 50% Glycerol, 0.05% Proclin 300.
<b>Concentration</b>	1.15 mg/ml
<b>Clonality</b>	Polyclonal
<b>Isotype</b>	IgG
<b>Applications</b>	ELISA, IHC, WB
<b>Target</b>	ORF1a polyprotein, ORF1ab
<b>Purification</b>	Purified by antigen affinity column.
<b>Accession</b>	QTN86389.1
<b>Stability and Storage</b>	Use a manual defrost freezer and avoid repeated freeze thaw cycles. Store at 2 to 8°C for frequent use. Store at -20 to -80°C for twelve months from the date of receipt.

**Note**

For research use only.

## Data Image

---



Recombinant Protein lysates were subjected to SDS PAGE followed by western blot with NSP5/3CL-PRO/M Pro antibody (PVV01302) at 1 µg/ml.

Lane 1: Recombinant Protein

Second Ab: Goat Anti-Rabbit IgG H&L Polyclonal antibody, HRP (PTB96431) at 0.1 µg/mL.

Predict MW: 36 kDa

Observed MW: 36 kDa