

# Anti-CCHFV GP/Envelope glycoprotein Polyclonal Antibody

## Summary

---

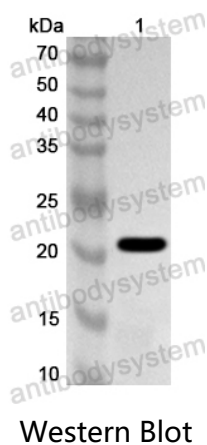
<b>Catalog No.</b>	PVV37901
<b>Host species</b>	Rabbit
<b>Tested applications</b>	ELISA: 1:4000-1:8000, IHC: 1:50-1:200, WB: 1:500-1:4000
<b>Species reactivity</b>	Crimean-Congo hemorrhagic fever virus (strain Nigeria/IbAr10200/1970) (CCHFV)
<b>Immunogen</b>	E. coli - derived recombinant CCHFV GP/Envelope glycoprotein (Ser520-Ser698).
<b>Form</b>	Liquid
<b>Storage buffer</b>	0.01M PBS, pH 7.4, 50% Glycerol, 0.05% Proclin 300.
<b>Concentration</b>	0.93 mg/ml
<b>Clonality</b>	Polyclonal
<b>Isotype</b>	IgG
<b>Applications</b>	ELISA, IHC, WB
<b>Target</b>	Envelopment polyprotein, M polyprotein, Mucin-like variable region, GP38, Glycoprotein N, Gn, 37 kDa protein, Glycoprotein G2, Non-Structural protein M, NSm, 15 kDa protein, Glycoprotein C, Gc, 75 kDa protein, Glycoprotein G1, GP
<b>Purification</b>	Purified by antigen affinity column.
<b>Accession</b>	Q8JSZ3

**Stability and Storage**

Use a manual defrost freezer and avoid repeated freeze thaw cycles. Store at 2 to 8°C for frequent use. Store at -20 to -80°C for twelve months from the date of receipt.

**Note**

For research use only.

**Data Image**

Recombinant Protein lysates were subjected to SDS PAGE followed by western blot with GP/Envelope glycoprotein antibody (PVV37901) at 1 µg/ml.

Lane 1: Recombinant Protein

Second Ab: Goat Anti-Rabbit IgG H&L Polyclonal antibody, HRP (PTB96431) at 0.1 µg/mL.

Predict MW: 22 kDa

Observed MW: 22 kDa