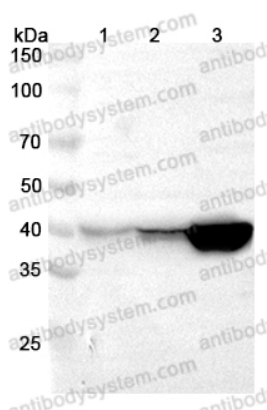


Anti-UPB1 Polyclonal Antibody

Summary

Catalog No.	PHJ73301
Host species	Rabbit
Tested applications	ELISA: 1:4000-1:8000, IHC: 1:50-1:100, WB: 1:1000-1:4000
Species reactivity	Human, Mouse, Rat
Immunogen	E. coli - derived recombinant Human UPB1 (Trp121-Glu384).
Form	Liquid
Storage buffer	0.01M PBS, pH 7.4, 50% Glycerol, 0.05% Proclin 300.
Clonality	Polyclonal
Isotype	IgG
Applications	ELISA, IHC, WB
Target	UPB1,N-carbamoyl-beta-alanine amidohydrolase,Beta-ureidopropionase,Beta-alanine synthase,BUP1,BUP-1
Purification	Purified by antigen affinity column.
Accession	Q9UBR1
Stability and Storage	Use a manual defrost freezer and avoid repeated freeze thaw cycles. Store at 2 to 8°C for frequent use. Store at -20 to -80°C for twelve months from the date of receipt.
Note	For research use only.

Data Image



Western Blot

Various lysates were subjected to SDS PAGE followed by western blot with UPB1 antibody (PHJ73301) at 1 μ g/ml.

Lane 1: Mouse liver lysate

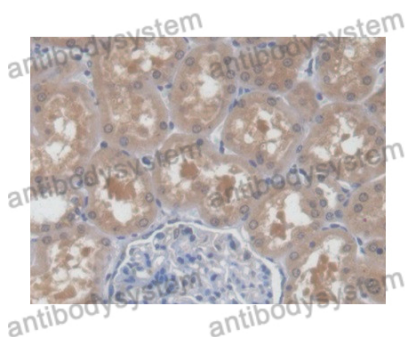
Lane 2: Rat kidney lysate

Lane 3: Rat liver lysate

Second Ab: Goat Anti-Rabbit IgG H&L Polyclonal antibody, HRP (PTB96431) at 0.1 μ g/mL.

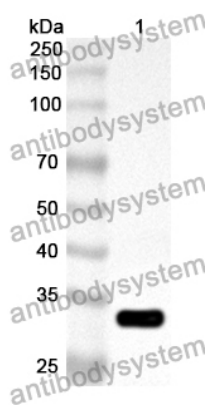
Predict MW: 43 kDa

Observed MW: 40 kDa



Immunohistochemical

Immunohistochemical analysis of human kidney stained for UPB1 with PHJ73301.



Western Blot

Recombinant Protein lysates were subjected to SDS PAGE followed by western blot with UPB1 antibody (PHJ73301) at 1 μ g/ml.

Lane 1: Recombinant Protein

Second Ab: Goat Anti-Rabbit IgG H&L Polyclonal antibody, HRP (PTB96431) at 0.1 μ g/mL.

Predict MW: 32 kDa

Observed MW: 32 kDa