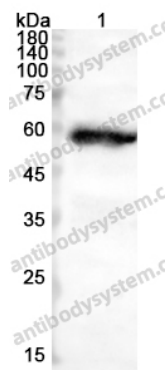


Anti-CD274/PD-L1/B7-H1 Polyclonal Antibody

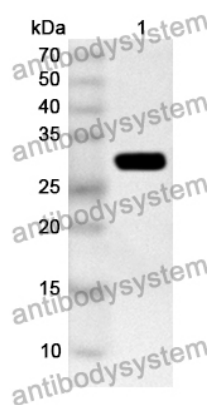
Summary

| | |
|------------------------------|---|
| Catalog No. | PHJ70101 |
| Host species | Rabbit |
| Tested applications | ELISA: 1:4000-1:8000, IHC: 1:50-1:100, WB: 1:1000-1:4000 |
| Species reactivity | Human |
| Immunogen | E. coli - derived recombinant Human CD274/PD-L1/B7-H1 (Phe19-Arg238). |
| Form | Liquid |
| Storage buffer | 0.01M PBS, pH 7.4, 50% Glycerol, 0.05% Proclin 300. |
| Clonality | Polyclonal |
| Isotype | IgG |
| Applications | ELISA, IHC, WB |
| Target | B7-H1,Programmed cell death 1 ligand 1,PDCD1 ligand 1,PDCD1L1,B7 homolog 1,PDCD1LG1,PDL1,hPD-L1,Programmed death ligand 1,B7H1,PD-L1,CD274 |
| Purification | Purified by antigen affinity column. |
| Accession | Q9NZQ7 |
| Stability and Storage | Use a manual defrost freezer and avoid repeated freeze thaw cycles. Store at 2 to 8°C for frequent use. Store at -20 to -80°C for twelve months from the date of receipt. |
| Note | For research use only. |

Data Image



Western blot



Western Blot

Various lysates were subjected to SDS PAGE followed by western blot with PDL1 antibody (PHJ70101) at 0.92ug/ml.

Lane 1: THP1 cell lysate

Second Ab: Goat Anti-Rabbit IgG H&L Polyclonal antibody, HRP (PTB96431) at 0.1 µg/mL.

Predict MW: 33 kDa

Observed MW: 55 kDa

Recombinant Protein lysates were subjected to SDS PAGE followed by western blot with CD274/PD-L1/B7-H1 antibody (PHJ70101) at 1 µg/ml.

Lane 1: Recombinant Protein

Second Ab: Goat Anti-Rabbit IgG H&L Polyclonal antibody, HRP (PTB96431) at 0.1 µg/mL.

Predict MW: 28 kDa

Observed MW: 28 kDa