

Anti-PLSCR4 Polyclonal Antibody

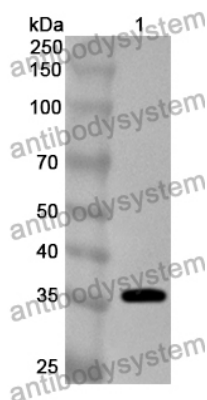
Summary

Catalog No.	PHJ66401
Host species	Rabbit
Tested applications	ELISA: 1:4000-1:8000, IHC: 1:50-1:100, WB: 1:1000-1:4000
Species reactivity	Human, Mouse
Immunogen	E. coli - derived recombinant Human PLSCR4 (Met1-Lys303).
Form	Liquid
Storage buffer	0.01M PBS, pH 7.4, 50% Glycerol, 0.05% Proclin 300.
Clonality	Polyclonal
Isotype	IgG
Applications	ELISA, IHC, WB
Target	PLSCR4, Cell growth-inhibiting gene 43 protein, PL scramblase 4, TRA1, Ca(2+)-dependent phospholipid scramblase 4, Phospholipid scramblase 4
Purification	Purified by antigen affinity column.
Accession	Q9NRQ2
Stability and Storage	Use a manual defrost freezer and avoid repeated freeze thaw cycles. Store at 2 to 8°C for frequent use. Store at -20 to -80°C for twelve months from the date of receipt.
Note	For research use only.

Data Image



Western blot



Western Blot

Various lysates were subjected to SDS PAGE followed by western blot with PLSCR4 antibody (PHJ66401) at 0.42ug/ml.

Lane 1: 293T cell lysate

Lane 2: HeLa cell lysate

Lane 3: HepG2 cell lysate

Second Ab: Goat Anti-Rabbit IgG H&L Polyclonal antibody, HRP (PTB96431) at 0.1 µg/mL.

Predict MW: 37 kDa

Observed MW: 45 kDa

Recombinant Protein lysates were subjected to SDS PAGE followed by western blot with PLSCR4 antibody (PHJ66401) at 1 µg/ml.

Lane 1: Recombinant Protein

Second Ab: Goat Anti-Rabbit IgG H&L Polyclonal antibody, HRP (PTB96431) at 0.1 µg/mL.

Predict MW: 36 kDa

Observed MW: 36 kDa