

Recombinant Human ETHE1 Protein, N-His

Summary

Catalog No.	YHB69301
Alternative Names	Persulfide dioxygenase ETHE1, mitochondrial, 1.13.11.18, Ethylmalonic encephalopathy protein 1, Hepatoma subtracted clone one protein, Sulfur dioxygenase ETHE1, ETHE1, HSCO
Form	Lyophilized
Storage buffer	Lyophilized from a solution in PBS pH 7.4, 0.02% NLS, 1mM EDTA, 4% Trehalose, 1% Mannitol.
Purity	>90% as determined by SDS-PAGE.
Applications	ELISA, Immunogen, SDS-PAGE, WB, Bioactivity testing in progress
Endotoxin level	Please contact with the lab for this information.
Expression system	E. coli
Accession	O95571
Protein length	Ile23-Ala254
Nature	Recombinant
Predicted molecular weight	27.87 kDa
Stability and Storage	Use a manual defrost freezer and avoid repeated freeze thaw cycles. Store at 2 to 8°C for frequent use. Store at -20 to -80°C for twelve months from the date of receipt.
Reconstitution	Reconstitute in sterile water for a stock solution. A copy of datasheet will be provided with the products, please refer to it for details.
Species	Homo sapiens (Human)

Recombinant Proteins & Antibodies

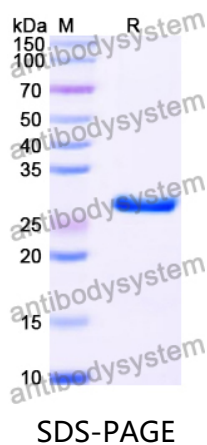
Shipping

In general, proteins are provided as lyophilized powder/frozen liquid. They are shipped out with dry ice/blue ice unless customers require otherwise.

Note

For research use only.

Data Image



SDS-PAGE for Recombinant Human ETHE1 protein