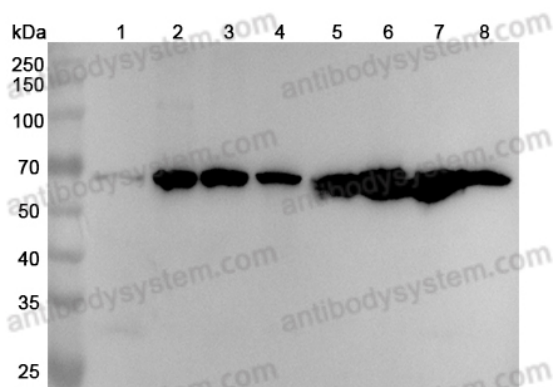


Anti-SLC40A1 Polyclonal Antibody

Summary

Catalog No.	PHJ61901
Host species	Rabbit
Tested applications	ELISA: 1:4000-1:8000, IHC: 1:50-1:100, WB: 1:1000-1:4000
Species reactivity	Human, Mouse, Rat
Immunogen	E. coli - derived recombinant Human SLC40A1 (Trp127-Val321).
Form	Liquid
Storage buffer	0.01M PBS, pH 7.4, 50% Glycerol, 0.05% Proclin 300.
Concentration	0.7 mg/ml
Clonality	Polyclonal
Isotype	IgG
Applications	ELISA, IHC, WB
Target	Solute carrier family 40 member 1, SLC11A3, FPN1, SLC40A1, Iron-regulated transporter 1, IREG1, Ferroportin-1
Purification	Purified by antigen affinity column.
Accession	Q9NP59
Stability and Storage	Use a manual defrost freezer and avoid repeated freeze thaw cycles. Store at 2 to 8°C for frequent use. Store at -20 to -80°C for twelve months from the date of receipt.
Note	For research use only.

Data Image



Western Blot

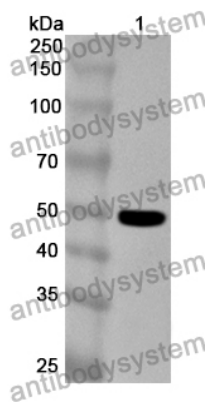
Various lysates were subjected to SDS PAGE followed by western blot with SLC40A1 antibody (PHJ61901) at 1 μ g/ml.

- Lane 1: Caco2 cell lysate
- Lane 2: 293T cell lysate
- Lane 3: HepG2 cell lysate
- Lane 4: Hela cell lysate
- Lane 5: Rat muscle lysate
- Lane 6: Rat kidney lysate
- Lane 7: Rat liver lysate
- Lane 8: Rat spleen lysate

Second Ab: Goat Anti-Rabbit IgG H&L Polyclonal antibody, HRP (PTB96431) at 0.1 μ g/mL.

Predict MW: 63 kDa

Observed MW: 63 kDa



Western Blot

Recombinant Protein lysates were subjected to SDS PAGE followed by western blot with SLC40A1 antibody (PHJ61901) at 1 μ g/ml.

Lane 1: Recombinant Protein

Second Ab: Goat Anti-Rabbit IgG H&L Polyclonal antibody, HRP (PTB96431) at 0.1 μ g/mL.

Predict MW: 49 kDa

Observed MW: 49 kDa