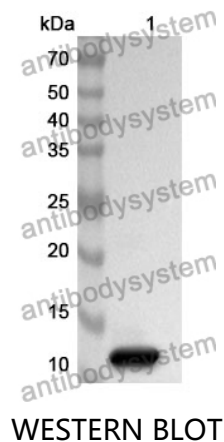


Anti-RETN Polyclonal Antibody

Summary

Catalog No.	PHJ61301
Host species	Rabbit
Tested applications	ELISA: 1:4000-1:8000, IHC: 1:50-1:100, WB: 1:1000-1:4000
Species reactivity	Human
Immunogen	E. coli - derived recombinant Human RETN (Ser17-Pro108).
Form	Liquid
Storage buffer	0.01M PBS, pH 7.4, 50% Glycerol, 0.05% Proclin 300.
Clonality	Polyclonal
Isotype	IgG
Applications	ELISA, IHC, WB
Target	Cysteine-rich secreted protein A12-alpha-like 2,Adipose tissue-specific secretory factor,FIZZ3,HXCP1,RETN,C/EBP-epsilon-regulated myeloid-specific secreted cysteine-rich protein,Cysteine-rich secreted protein FIZZ3,RSTN,ADSF,Resistin
Purification	Purified by antigen affinity column.
Accession	Q9HD89
Stability and Storage	Use a manual defrost freezer and avoid repeated freeze thaw cycles. Store at 2 to 8°C for frequent use. Store at -20 to -80°C for twelve months from the date of receipt.
Note	For research use only.

Data Image



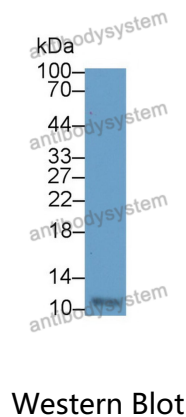
Recombinant Protein lysates were subjected to SDS PAGE followed by western blot with RETN antibody (PHJ61301) at 1 µg/ml.

Lane 1: Recombinant protein

Second Ab: Goat Anti-Rabbit IgG H&L Polyclonal antibody, HRP (PTB96431) at 0.1 µg/mL.

Predict MW: 12 kDa

Observed MW: 12 kDa



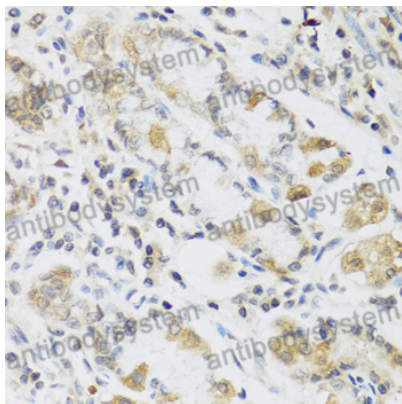
Various lysates were subjected to SDS PAGE followed by western blot with RETN antibody (PHJ61301) at 1 µg/ml.

Lane 1: Human urine

Second Ab: Goat Anti-Rabbit IgG H&L Polyclonal antibody, HRP (PTB96431) at 0.1 µg/mL.

Predict MW: 12 kDa

Observed MW: 12 kDa



Immunohistochemical

Immunohistochemical analysis of human stomach stained for RETN with PHJ61301.