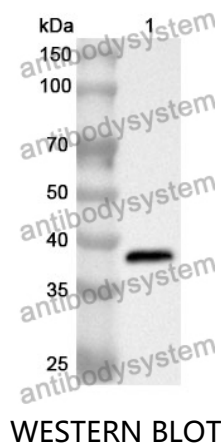


Anti-SYTL2 Polyclonal Antibody

Summary

Catalog No.	PHJ60501
Host species	Rabbit
Tested applications	ELISA: 1:4000-1:8000, IHC: 1:50-1:100, WB: 1:1000-1:4000
Species reactivity	Human, Mouse
Immunogen	E. coli - derived recombinant Human SYTL2 (Met559-Leu880).
Form	Liquid
Storage buffer	0.01M PBS, pH 7.4, 50% Glycerol, 0.05% Proclin 300.
Clonality	Polyclonal
Isotype	IgG
Applications	ELISA, IHC, WB
Target	Breast cancer-associated antigen SGA-72M,SYTL2,Synaptotagmin-like protein 2,SGA72M,SLP2,Exophilin-4,SLP2A,KIAA1597
Purification	Purified by antigen affinity column.
Accession	Q9HCH5
Stability and Storage	Use a manual defrost freezer and avoid repeated freeze thaw cycles. Store at 2 to 8°C for frequent use. Store at -20 to -80°C for twelve months from the date of receipt.
Note	For research use only.

Data Image



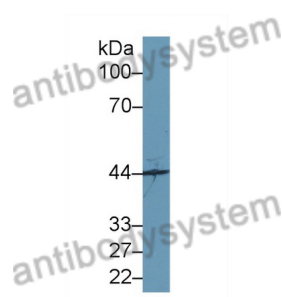
Recombinant Protein lysates were subjected to SDS PAGE followed by western blot with SYTL2 antibody (PHJ60501) at 1 µg/ml.

Lane 1: Recombinant protein

Second Ab: Goat Anti-Rabbit IgG H&L Polyclonal antibody, HRP (PTB96431) at 0.1 µg/mL.

Predict MW: 39 kDa

Observed MW: 39 kDa



Various lysates were subjected to SDS PAGE followed by western blot with SYTL2 antibody (PHJ60501) at 1 µg/ml.

Lane 1: Mouse cerebrum

Second Ab: Goat Anti-Rabbit IgG H&L Polyclonal antibody, HRP (PTB96431) at 0.1 µg/mL.

Predict MW: 43 kDa

Observed MW: 44 kDa