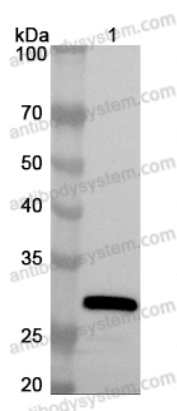


Anti-GFP Polyclonal Antibody

Summary

Catalog No.	PWK08401
Host species	Rabbit
Tested applications	ELISA: 1:4000-1:8000, IHC: 1:50-1:200, WB: 1:1000-1:4000
Species reactivity	GFP tag
Immunogen	E. coli - derived recombinant GFP (Met1-Lys238).
Form	Liquid
Storage buffer	0.01M PBS, pH 7.4, 50% Glycerol, 0.05% Proclin 300.
Concentration	2.46 mg/ml
Clonality	Polyclonal
Isotype	IgG
Applications	ELISA, IHC, WB
Target	Green fluorescent protein, GFP
Purification	Purified by antigen affinity column.
Accession	P42212
Stability and Storage	Use a manual defrost freezer and avoid repeated freeze thaw cycles. Store at 2 to 8°C for frequent use. Store at -20 to -80°C for twelve months from the date of receipt.
Note	For research use only.

Data Image



Western Blot

Recombinant Protein lysates were subjected to SDS PAGE followed by western blot with GFP antibody (PWK08401) at 1 µg/ml.

Lane 1: Recombinant Enhanced GFP Protein ([YWK08401](#))

Second Ab: Goat Anti-Rabbit IgG H&L Polyclonal antibody, HRP (PTB96431) at 0.1 µg/mL.

Predict MW: 28 kDa

Observed MW: 28 kDa