

# Anti-HSPA5 Polyclonal Antibody

## Summary

---

<b>Catalog No.</b>	PHC84902
<b>Host species</b>	Rabbit
<b>Tested applications</b>	ELISA: 1:4000-1:8000, IHC: 1:50-1:100, WB: 1:1000-1:4000
<b>Species reactivity</b>	Human, Mouse
<b>Immunogen</b>	E. coli - derived recombinant Human HSPA5 (Leu351-Leu654).
<b>Form</b>	Liquid
<b>Storage buffer</b>	0.01M PBS, pH 7.4, 50% Glycerol, 0.05% Proclin 300.
<b>Clonality</b>	Polyclonal
<b>Isotype</b>	IgG
<b>Applications</b>	ELISA, IHC, WB
<b>Target</b>	Heat shock protein 70 family protein 5, 78 kDa glucose-regulated protein, HSPA5, Binding-immunoglobulin protein, GRP-78, HSP70 family protein 5, Heat shock protein family A member 5, Endoplasmic reticulum chaperone BiP, GRP78, BiP, Immunoglobulin heavy chain-binding protein
<b>Purification</b>	Purified by antigen affinity column.
<b>Accession</b>	P11021
<b>Stability and Storage</b>	Use a manual defrost freezer and avoid repeated freeze thaw cycles. Store at 2 to 8°C for frequent use. Store at -20 to -80°C for twelve months from the date of receipt.
<b>Note</b>	For research use only.

## Data Image



Western Blot

Various lysates were subjected to SDS PAGE followed by western blot with HSPA5 antibody (PHC84902) at 1 µg/ml.

Lane 1: HepG2 cell lysate

Lane 2: NIH3T3 cell lysate

Lane 3: 4T1 cell lysate

Lane 4: MCF-7 cell lysate

Lane 5: Jurkat cell lysate

Lane 6: PC-12 cell lysate

Lane 7: Hela cell lysate

Lane 8: A549 cell lysate

Lane 9: Mouse brain lysate

Lane 10: Mouse liver lysate

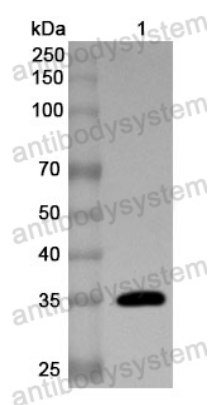
Lane 11: Rat brain lysate

Lane 12: Rat liver lysate

Second Ab: Goat Anti-Rabbit IgG H&L Polyclonal antibody, HRP (PTB96431) at 0.1 µg/mL.

Predict MW: 72 kDa

Observed MW: 70-78 kDa



Western Blot

Recombinant Protein lysates were subjected to SDS PAGE followed by western blot with HSPA5 antibody (PHC84902) at 1  $\mu$ g/ml.

Lane 1: Recombinant Protein

Second Ab: Goat Anti-Rabbit IgG H&L Polyclonal antibody, HRP (PTB96431) at 0.1  $\mu$ g/mL.

Predict MW: Human

Observed MW: