

Recombinant Human BCL2L11 Protein, N-His-SUMO

Summary

Catalog No.	YHA69701
Alternative Names	BCL2L11, Bcl-2-like protein 11, Bcl2-interacting mediator of cell death, BIM, Bcl2-L-11
Form	Lyophilized
Storage buffer	Lyophilized from a solution in PBS pH 7.4, 0.02% NLS, 1mM EDTA, 4% Trehalose, 1% Mannitol.
Purity	>90% as determined by SDS-PAGE.
Applications	ELISA, Immunogen, SDS-PAGE, WB, Bioactivity testing in progress
Endotoxin level	Please contact with the lab for this information.
Expression system	E. coli
Accession	O43521
Protein length	Thr116-His198
Nature	Recombinant
Predicted molecular weight	22.31 kDa
Stability and Storage	Use a manual defrost freezer and avoid repeated freeze thaw cycles. Store at 2 to 8°C for frequent use. Store at -20 to -80°C for twelve months from the date of receipt.
Reconstitution	Reconstitute in sterile water for a stock solution. A copy of datasheet will be provided with the products, please refer to it for details.
Species	Homo sapiens (Human)

Recombinant Proteins & Antibodies

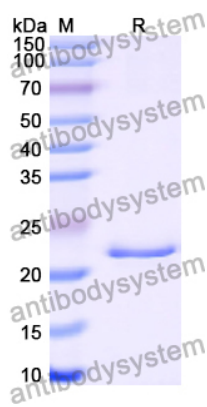
Shipping

In general, proteins are provided as lyophilized powder/frozen liquid. They are shipped out with dry ice/blue ice unless customers require otherwise.

Note

For research use only.

Data Image



SDS-PAGE

SDS-PAGE for Recombinant Human BCL2L11 protein