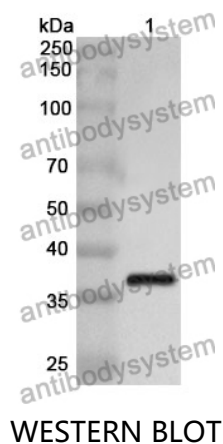


Anti-CXCL16/SR-PSOX Polyclonal Antibody

Summary

Catalog No.	PHJ55602
Host species	Rabbit
Tested applications	ELISA: 1:4000-1:8000, IHC: 1:50-1:100, WB: 1:1000-1:4000
Species reactivity	Human
Immunogen	E. coli - derived recombinant Human CXCL16/SR-PSOX (Pro49-Pro137).
Form	Liquid
Storage buffer	0.01M PBS, pH 7.4, 50% Glycerol, 0.05% Proclin 300.
Clonality	Polyclonal
Isotype	IgG
Applications	ELISA, IHC, WB
Target	C-X-C motif chemokine 16,CXCL16,Scavenger receptor for phosphatidylserine and oxidized low density lipoprotein,Small-inducible cytokine B16,Transmembrane chemokine CXCL16,SRPSOX,SR-PSOX,SCYB16
Purification	Purified by antigen affinity column.
Accession	Q9H2A7
Stability and Storage	Use a manual defrost freezer and avoid repeated freeze thaw cycles. Store at 2 to 8°C for frequent use. Store at -20 to -80°C for twelve months from the date of receipt.
Note	For research use only.

Data Image



Recombinant Protein lysates were subjected to SDS PAGE followed by western blot with CXCL16/SR-PSOX antibody (PHJ55602) at 1 µg/ml.

Lane 1: Recombinant protein

Second Ab: Goat Anti-Rabbit IgG H&L Polyclonal antibody, HRP (PTB96431) at 0.1 µg/mL.

Predict MW: 37 kDa

Observed MW: 37 kDa