

Anti-CARD9 Polyclonal Antibody

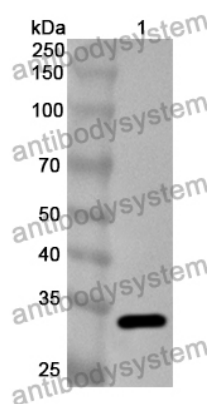
Summary

Catalog No.	PHJ55401
Host species	Rabbit
Tested applications	ELISA: 1:4000-1:8000, IHC: 1:50-1:100, WB: 1:1000-1:4000
Species reactivity	Human, Mouse, Rat
Immunogen	E. coli - derived recombinant Human CARD9 (Asp26-Leu283).
Form	Liquid
Storage buffer	0.01M PBS, pH 7.4, 50% Glycerol, 0.05% Proclin 300.
Clonality	Polyclonal
Isotype	IgG
Applications	ELISA, IHC, WB
Target	hCARD9,CARD9,Caspase recruitment domain-containing protein 9
Purification	Purified by antigen affinity column.
Accession	Q9H257
Stability and Storage	Use a manual defrost freezer and avoid repeated freeze thaw cycles. Store at 2 to 8°C for frequent use. Store at -20 to -80°C for twelve months from the date of receipt.
Note	For research use only.

Data Image



Western blot



Western Blot

Various lysates were subjected to SDS PAGE followed by western blot with CARD9 antibody (PHJ55401) at 0.8 μ g/ml.

Lane 1: K562 cell lysate

Second Ab: Goat Anti-Rabbit IgG H&L Polyclonal antibody, HRP (PTB96431) at 0.1 μ g/mL.

Predict MW: 62 kDa

Observed MW: 62 kDa

Recombinant Protein lysates were subjected to SDS PAGE followed by western blot with CARD9 antibody (PHJ55401) at 1 μ g/ml.

Lane 1: Recombinant Protein

Second Ab: Goat Anti-Rabbit IgG H&L Polyclonal antibody, HRP (PTB96431) at 0.1 μ g/mL.

Predict MW: 32 kDa

Observed MW: 32 kDa