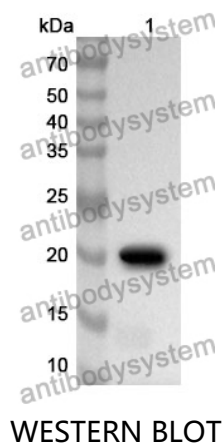


Anti-ZBP1 Polyclonal Antibody

Summary

Catalog No.	PHJ54401
Host species	Rabbit
Tested applications	ELISA: 1:4000-1:8000, IHC: 1:50-1:200, WB: 1:500-1:4000
Species reactivity	Human
Immunogen	E. coli - derived recombinant Human ZBP1 (Arg10-Pro167).
Form	Liquid
Storage buffer	Liquid in PBS containing 50% glycerol, 0.5% BSA and 0.02% sodium azide.
Concentration	1 mg/ml
Clonality	Polyclonal
Isotype	IgG
Applications	ELISA, IHC, WB
Target	DNA-dependent activator of IFN-regulatory factors,DLM1,ZBP1,C20orf183,Z-DNA-binding protein 1,DAI,Tumor stroma and activated macrophage protein DLM-1
Purification	Purified by antigen affinity column.
Accession	Q9H171
Stability and Storage	Use a manual defrost freezer and avoid repeated freeze thaw cycles. Store at 2 to 8°C for frequent use. Store at -20 to -80°C for twelve months from the date of receipt.
Note	For research use only.

Data Image



Recombinant Protein lysates were subjected to SDS PAGE followed by western blot with ZBP1 antibody (PHJ54401) at 1 μ g/ml.

Lane 1: Recombinant protein

Second Ab: Goat Anti-Rabbit IgG H&L Polyclonal antibody, HRP (PTB96431) at 0.1 μ g/mL.

Predict MW: 20 kDa

Observed MW: 20 kDa