

Recombinant Human PPP2R1A Protein, N-His

Summary

| | |
|-----------------------------------|----------------------------------------------------------------------------------------------------------------------------------------------------------------------------------------------------------------|
| Catalog No. | YHD87401 |
| Alternative Names | Serine/threonine-protein phosphatase 2A 65 kDa regulatory subunit A alpha isoform, Medium tumor antigen-associated 61 kDa protein, PP2A subunit A isoform PR65-alpha, PP2A subunit A isoform R1-alpha, PPP2R1A |
| Form | Lyophilized |
| Storage buffer | Lyophilized from a solution in PBS pH 7.4, 1mM EDTA, 4% Trehalose, 1% Mannitol. |
| Purity | >90% as determined by SDS-PAGE. |
| Applications | ELISA, Immunogen, SDS-PAGE, WB, Bioactivity testing in progress |
| Endotoxin level | Please contact with the lab for this information. |
| Expression system | E. coli |
| Accession | P30153 |
| Protein length | Met1-Ala589 |
| Nature | Recombinant |
| Predicted molecular weight | 67.47 kDa |
| Stability and Storage | Use a manual defrost freezer and avoid repeated freeze thaw cycles. Store at 2 to 8°C for frequent use. Store at -20 to -80°C for twelve months from the date of receipt. |
| Reconstitution | Reconstitute in sterile water for a stock solution. |
| Species | Homo sapiens (Human) |

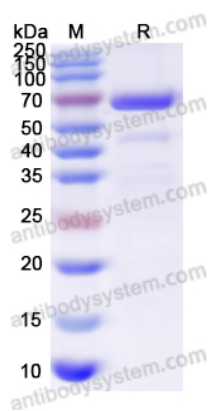
Shipping

In general, proteins are provided as lyophilized powder/frozen liquid. They are shipped out with dry ice/blue ice unless customers require otherwise.

Note

For research use only.

Data Image



SDS-PAGE

SDS-PAGE for Recombinant Human PPP2R1A Protein