

Anti-YWHAZ Polyclonal Antibody

Summary

Catalog No.	PHF57101
Host species	Rabbit
Tested applications	ELISA: 1:4000-1:8000, IHC: 1:50-1:100, WB: 1:1000-1:4000
Species reactivity	Human, Mouse, Rat
Immunogen	E. coli - derived recombinant Human YWHAZ (Met1-Asn245).
Form	Liquid
Storage buffer	0.01M PBS, pH 7.4, 50% Glycerol, 0.05% Proclin 300.
Clonality	Polyclonal
Isotype	IgG
Applications	ELISA, IHC, WB
Target	14-3-3 protein zeta/delta, Protein kinase C inhibitor protein 1, KCIP-1, YWHAZ
Purification	Purified by antigen affinity column.
Accession	P63104
Stability and Storage	Use a manual defrost freezer and avoid repeated freeze thaw cycles. Store at 2 to 8°C for frequent use. Store at -20 to -80°C for twelve months from the date of receipt.
Note	For research use only.

Data Image

Various lysates were subjected to SDS PAGE followed by western blot with YWHAZ antibody (PHF57101) at 1 µg/ml.



WESTERN-BLOT

Lane 1: SH-SY5Y cell lysate

Lane 2: Jurkat cell lysate

Lane 3: NIH3T3 cell lysate

Lane 4: Raji cell lysate

Lane 5: A549 cell lysate

Lane 6: K562 cell lysate

Lane 7: Hela cell lysate

Lane 8: PC-12 cell lysate

Lane 9: Mouse brain lysate

Lane 10: Mouse kidney lysate

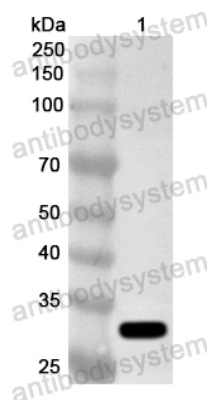
Lane 11: Rat brain lysate

Lane 12: Rat kidney lysate

Second Ab: Goat Anti-Rabbit IgG H&L Polyclonal antibody, HRP (PTB96431) at 0.1 µg/mL.

Predict MW: 28 kDa

Observed MW: 28 kDa



Western Blot

Recombinant Protein lysates were subjected to SDS PAGE followed by western blot with YWHAZ antibody (PHF57101) at 1 µg/ml.

Lane 1: Recombinant Protein

Second Ab: Goat Anti-Rabbit IgG H&L Polyclonal antibody, HRP (PTB96431) at 0.1 µg/mL.

Predict MW: 30 kDa

Observed MW: 30 kDa