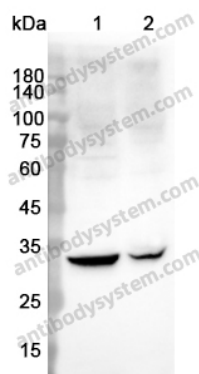


Anti-CD273/PD-L2/PDCD1LG2 Polyclonal Antibody

Summary

Catalog No.	PHJ48501
Host species	Rabbit
Tested applications	ELISA: 1:4000-1:8000, IHC: 1:50-1:100, WB: 1:1000-1:4000
Species reactivity	Human
Immunogen	E. coli - derived recombinant Human CD273/PD-L2/PDCD1LG2 (Leu20-Thr220).
Form	Liquid
Storage buffer	0.01M PBS, pH 7.4, 50% Glycerol, 0.05% Proclin 300.
Clonality	Polyclonal
Isotype	IgG
Applications	ELISA, IHC, WB
Target	PDCD1 ligand 2,B7-DC,PD-L2,PDCD1LG2,PDCD1L2,PDL2,Butyrophilin B7-DC,Programmed death ligand 2,Programmed cell death 1 ligand 2,CD273,B7DC,PD-1 ligand 2
Purification	Purified by antigen affinity column.
Accession	Q9BQ51
Stability and Storage	Use a manual defrost freezer and avoid repeated freeze thaw cycles. Store at 2 to 8°C for frequent use. Store at -20 to -80°C for twelve months from the date of receipt.
Note	For research use only.

Data Image



Western blot

Various lysates were subjected to SDS PAGE followed by western blot with CD273 / PD-L2 / PDCD1LG2 antibody (PHJ48501) at 1µg/ml.

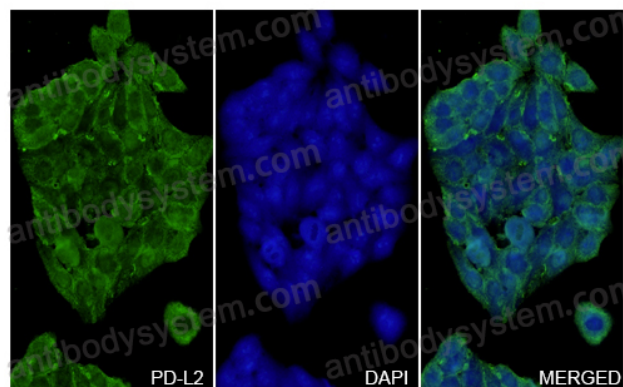
Lane 1: Raji cell lysate

Lane 2: HepG2 cell lysate

Second Ab: Goat Anti-Rabbit IgG H&L Polyclonal antibody, HRP (PTB96431) at 0.1 µg/mL.

Predict MW: 30 kDa

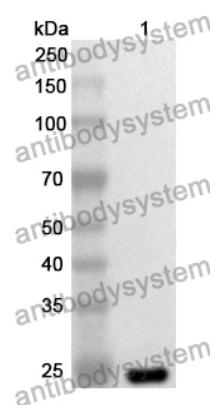
Observed MW: 32 kDa



Immunocytochemistry/ Immunofluorescence

CD273 / PD-L2 / PDCD1LG2 in HepG2 Cell Line.

The HepG2 cells were fixed with 4% paraformaldehyde (20 min), and then blocked with 5% goat serum for 1h. And the cells were incubated for 2h at 37°C with CD273 / PD-L2 / PDCD1LG2 (PHJ48501) at 20 µg/ml. The section was then incubated with Goat Anti-Rabbit IgG (Alexa Fluor-488) preabsorbed at 1/100 dilution (Shown in green) for 1 hour at room temperature. Nuclear DNA was labelled with DAPI (shown in blue).



Western Blot

Recombinant Protein lysates were subjected to SDS PAGE followed by western blot with CD273/PD-L2/PDCD1LG2 antibody (PHJ48501) at 1 µg/ml.

Lane 1: Recombinant Protein

Second Ab: Goat Anti-Rabbit IgG H&L Polyclonal antibody, HRP (PTB96431) at 0.1 µg/mL.

Predict MW: 25 kDa

Observed MW: 25 kDa