

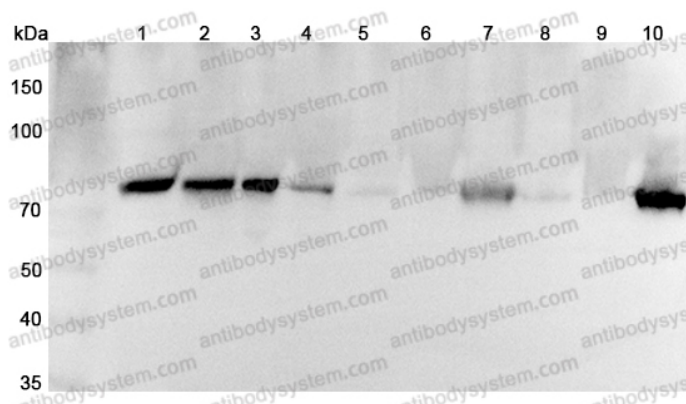
Anti-SEMA3C Polyclonal Antibody

Summary

| | |
|------------------------------|---|
| Catalog No. | PHJ48201 |
| Host species | Rabbit |
| Tested applications | ELISA: 1:4000-1:8000, IHC: 1:50-1:100, WB: 1:1000-1:4000 |
| Species reactivity | Human, Mouse, Rat |
| Immunogen | E. coli - derived recombinant Human SEMA3C (Arg28-Asp150). |
| Form | Liquid |
| Storage buffer | 0.01M PBS, pH 7.4, 50% Glycerol, 0.05% Proclin 300. |
| Clonality | Polyclonal |
| Isotype | IgG |
| Applications | ELISA, IHC, WB |
| Target | SEMA3C,Semaphorin-E,Semaphorin-3C,SEMAE,Sema E |
| Purification | Purified by antigen affinity column. |
| Accession | Q99985 |
| Stability and Storage | Use a manual defrost freezer and avoid repeated freeze thaw cycles. Store at 2 to 8°C for frequent use. Store at -20 to -80°C for twelve months from the date of receipt. |
| Note | For research use only. |

Data Image

Various lysates were subjected to SDS PAGE followed by western blot with SEMA3C antibody (PHJ48201) at 1µg/ml.



Western Blot

Lane 1: Raw264.7 cell lysate

Lane 2: MCF7 cell lysate

Lane 3: PC12 cell lysate

Lane 4: Jurkat cell lysate

Lane 5: Mouse lung lysate

Lane 6: Mouse small intestine lysate

Lane 7: Mouse heart lysate

Lane 8: Rat lung lysate

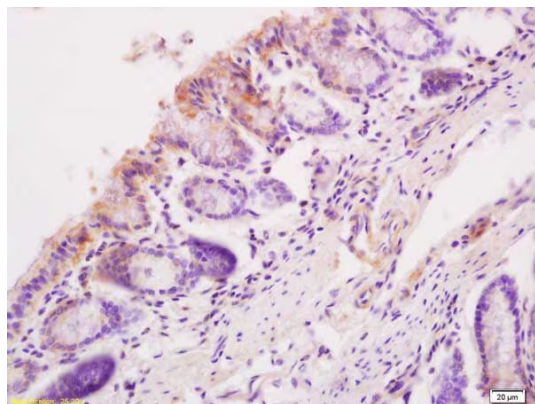
Lane 9: Rat small intestine lysate

Lane 10: Rat heart lysate

Second Ab: Goat Anti-Rabbit IgG H&L Polyclonal antibody, HRP (PTB96431) at 0.1 µg/mL.

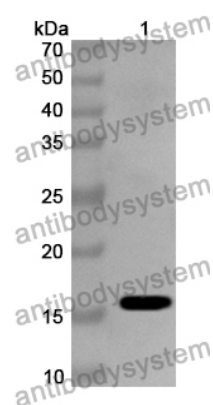
Predict MW: 85 kDa

Observed MW: 75 kDa



Immunohistochemical

Immunohistochemical analysis of Mouse intestine stained for SEMA3C with PHJ48201.



Western Blot

Recombinant Protein lysates were subjected to SDS PAGE followed by western blot with SEMA3C antibody (PHJ48201) at 1 μ g/ml.

Lane 1: Recombinant Protein

Second Ab: Goat Anti-Rabbit IgG H&L Polyclonal antibody, HRP (PTB96431) at 0.1 μ g/mL.

Predict MW: 16 kDa

Observed MW: 16 kDa