

# Anti-SLC30A3 Polyclonal Antibody

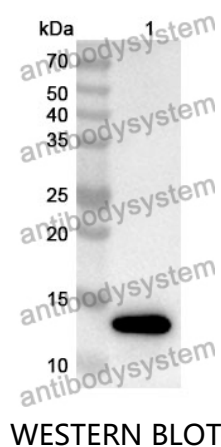
## Summary

---

|                              |   |
|------------------------------|---|
| <b>Catalog No.</b>           | PHJ46301  |
| <b>Host species</b>          | Rabbit  |
| <b>Tested applications</b>   | ELISA: 1:4000-1:8000, IHC: 1:50-1:100, WB: 1:1000-1:4000  |
| <b>Species reactivity</b>    | Human, Mouse, Rat   |
| <b>Immunogen</b>             | E. coli - derived recombinant Human SLC30A3 (Arg286-Pro386).  |
| <b>Form</b>                  | Liquid  |
| <b>Storage buffer</b>        | 0.01M PBS, pH 7.4, 50% Glycerol, 0.05% Proclin 300.   |
| <b>Clonality</b>             | Polyclonal  |
| <b>Isotype</b>               | IgG   |
| <b>Applications</b>          | ELISA, IHC, WB  |
| <b>Target</b>                | ZnT-3,Solute carrier family 30 member 3,ZNT3,Zinc transporter 3,SLC30A3   |
| <b>Purification</b>          | Purified by antigen affinity column.  |
| <b>Accession</b>             | Q99726  |
| <b>Stability and Storage</b> | Use a manual defrost freezer and avoid repeated freeze thaw cycles. Store at 2 to 8°C for frequent use. Store at -20 to -80°C for twelve months from the date of receipt. |
| <b>Note</b>                  | For research use only.  |

## Data Image

---



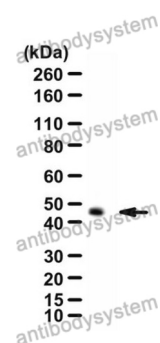
Recombinant Protein lysates were subjected to SDS PAGE followed by western blot with SLC30A3 antibody (PHJ46301) at 1 µg/ml.

Lane 1: Recombinant protein

Second Ab: Goat Anti-Rabbit IgG H&L Polyclonal antibody, HRP (PTB96431) at 0.1 µg/mL.

Predict MW: 14 kDa

Observed MW: 14 kDa



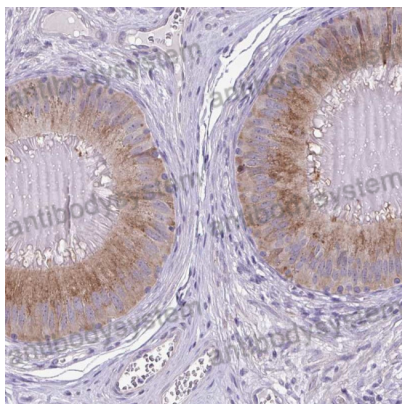
Various lysates were subjected to SDS PAGE followed by western blot with SLC30A3 antibody (PHJ46301) at 1 µg/ml.

Lane 1: Human brain

Second Ab: Goat Anti-Rabbit IgG H&L Polyclonal antibody, HRP (PTB96431) at 0.1 µg/mL.

Predict MW: 42 kDa

Observed MW: 45 kDa



Immunohistochemical

Immunohistochemical analysis of human epididymis stained for SLC30A3 with PHJ46301.