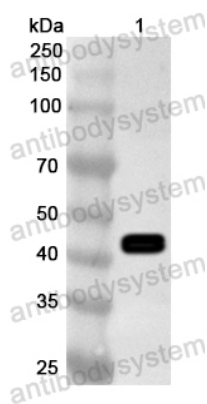


Anti-Rice ABI5 Polyclonal Antibody

Summary

Catalog No.	PZZ04201
Host species	Rabbit
Tested applications	ELISA: 1:4000-1:8000, IHC: 1:50-1:100, WB: 1:500-1:4000
Species reactivity	Oryza sativa subsp. japonica (Rice)
Immunogen	E. coli - derived recombinant Rice ABI5 (Met1-Trp388).
Form	Liquid
Storage buffer	0.01M PBS, pH 7.4, 50% Glycerol, 0.05% Proclin 300.
Concentration	0.67 mg/ml
Clonality	Polyclonal
Isotype	IgG
Applications	ELISA, WB
Target	bZIP transcription factor ABI5 homolog, OsABI5, bZIP transcription factor 10, OsBZIP10, ABI5, BZIP10, OREB1, Os01g0859300, LOC_Os01g64000, OsJ_04142, P0489B03.11, P0679C12.1
Purification	Purified by antigen affinity column.
Accession	Q8RZ35
Stability and Storage	Use a manual defrost freezer and avoid repeated freeze thaw cycles. Store at 2 to 8°C for frequent use. Store at -20 to -80°C for twelve months from the date of receipt.
Note	For research use only.

Data Image



Western Blot

Recombinant Protein lysates were subjected to SDS PAGE followed by western blot with ABI5 antibody (PZZ04201) at 1 μ g/ml.

Lane 1: Recombinant Protein

Second Ab: Goat Anti-Rabbit IgG H&L Polyclonal antibody, HRP (PTB96431) at 0.1 μ g/mL.

Predict MW: 44 kDa

Observed MW: 44 kDa