

Anti-Human RACK1 Polyclonal Antibody

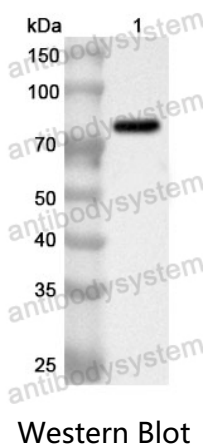
Summary

Catalog No.	PHF60301
Host species	Rabbit
Tested applications	ELISA: 1:4000-1:8000, IHC: 1:50-1:100, WB: 1:1000-1:4000
Species reactivity	Human
Immunogen	E. coli - derived recombinant Human RACK1 (Met1-Arg317).
Form	Liquid
Storage buffer	0.01M PBS, pH 7.4, 50% Glycerol, 0.05% Proclin 300.
Clonality	Polyclonal
Isotype	IgG
Applications	ELISA, IHC, WB
Target	RACK1, Human lung cancer oncogene 7 protein, Guanine nucleotide-binding protein subunit beta-like protein 12.3, GNB2L1, Cell proliferation-inducing gene 21 protein, Guanine nucleotide-binding protein subunit beta-2-like 1, Receptor of activated protein C kinase 1, Guanine nucleotide-binding protein subunit beta-2-like 1, N-terminally processed, Receptor for activated C kinase, Small ribosomal subunit protein RACK1, HLC-7
Purification	Purified by antigen affinity column.
Accession	P63244
Stability and Storage	Use a manual defrost freezer and avoid repeated freeze thaw cycles. Store at 2 to 8°C for frequent use. Store at -20 to -80°C for twelve months from the date of receipt.

Note

For research use only.

Data Image



Recombinant Protein lysates were subjected to SDS PAGE followed by western blot with RACK1 antibody (PHF60301) at 1 µg/ml.

Lane 1: Recombinant Protein

Second Ab: Goat Anti-Rabbit IgG H&L Polyclonal antibody, HRP (PTB96431) at 0.1 µg/mL.

Predict MW: 79 kDa

Observed MW: 79 kDa